



## Cricklewood Lane, NW2

### £425,000

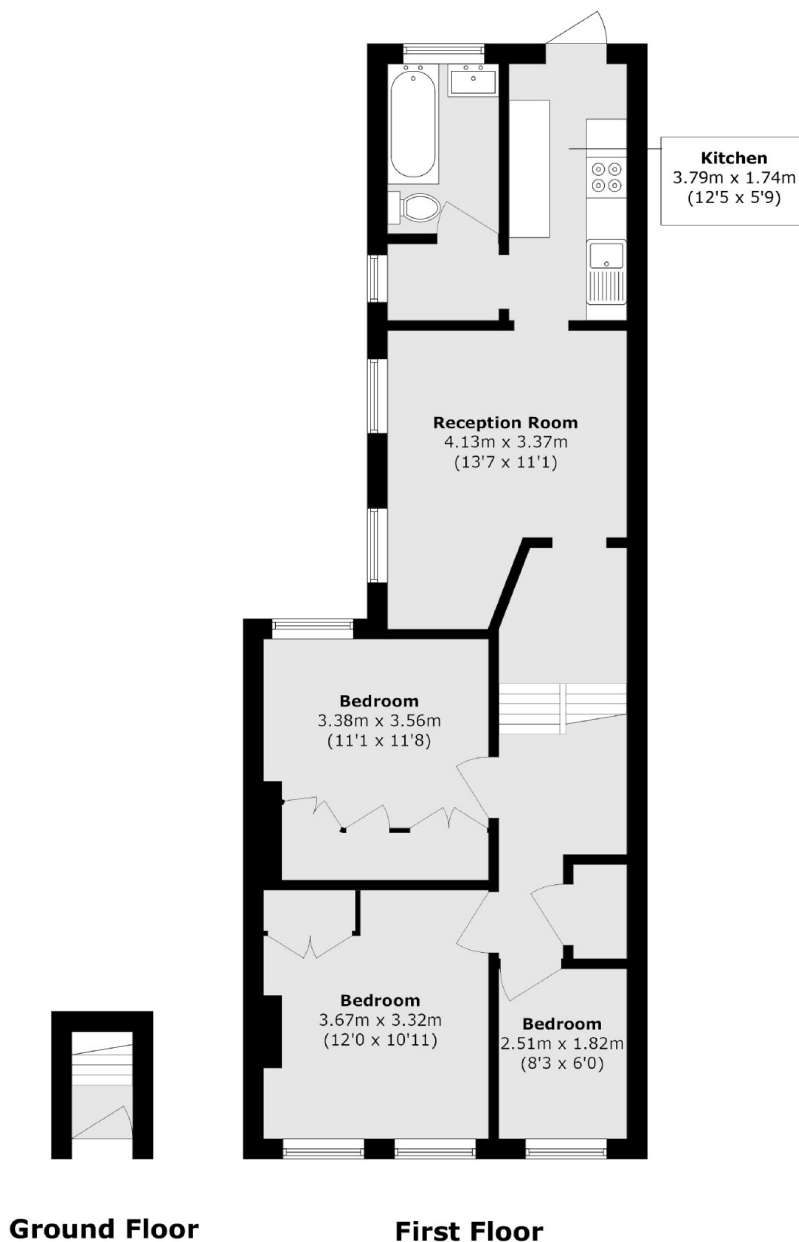
This three bedroom flat has its own front entrance and is located on the first floor of this converted Victorian terraced house. The property offers over 760 sq ft of accommodation and it would make an ideal first time purchase.

Transport links and amenities are abundant with Hampstead, West Hampstead and Golders Green all being within close proximity. For beautiful scenic walks and general recreation, Hampstead Heath and Golders Hill Park are a short walk away.

### Features

First Floor  
Three Bedrooms  
Victorian House  
Separate Kitchen  
Own Entrance  
Over 760sqf

# Cricklewood Lane, London, NW2



Total area (approx.): 70.9 sq. m (763.1 sq. ft)

## Dexters

West Hampstead Sales  
349 West End Lane  
London  
NW6 1LT  
Sales  
020 7644 9300

Energy Rating: D. We aim to make our particulars both accurate and reliable. However they are not guaranteed; nor do they form part of an offer or contract. If you require clarification on any points then please contact us, especially if you're traveling some distance to view. Please note that appliances and heating systems have not been tested and therefore no warranties can be given as to their good working order.

 **RICS** | Regulated  
Estate Agent  
and Letting Agent

[dexters.co.uk](https://www.dexters.co.uk)