



Westbere Road, NW2
£1,700,000

Dexters



Westbere Road, NW2

This beautifully presented five bedroom, three bathroom semi-detached house has been completely refurbished throughout, offering a perfect blend of period charm and modern finishes, ideal for contemporary family living.

Upon entering, you are welcomed by a spacious and elegant hallway, leading to a double reception room on the left, featuring high ceilings and large windows that flood the space with natural light. To the rear of the property, you'll find an open plan kitchen and dining space, complete with a large central island and bi-folding doors that open onto a generously sized private garden.

On the first floor, there are four well proportioned bedrooms, including a principle bedroom with a modern en suite while the front facing bedroom boasts access to a private balcony. The second floor features a spacious fifth bedroom with its own en suite and built-in storage, ideal as a guest suite.

Located on this popular residential road only a short walk to West Hampstead's transport links including Jubilee, Overground and Thameslink stations.

Features

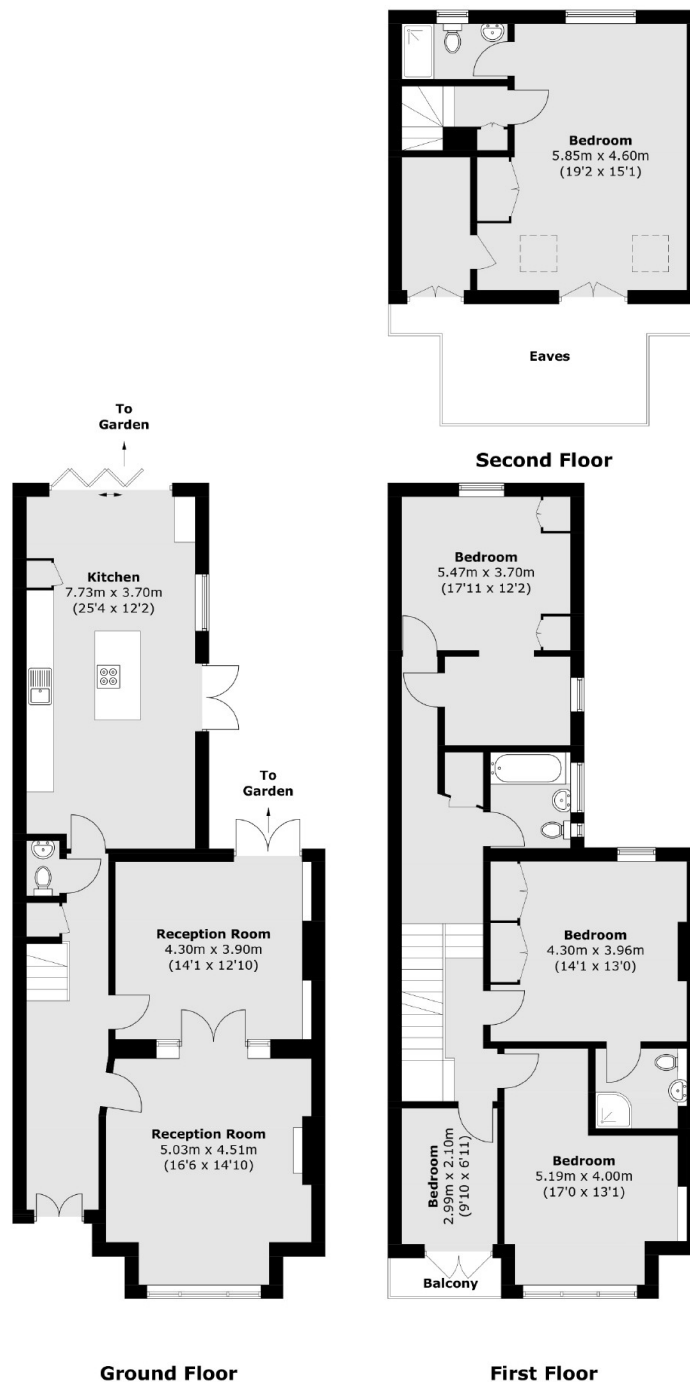
- Five Bedrooms
- Three Bathrooms
- Two Reception Rooms
- Kitchen/Dining Room
- Semi Detached
- Recently Refurbished







Westbere Road, London, NW2



Total area (approx.): 206.0 sq. m (2,217.4 sq. ft)
(Excluding Eaves)
Balcony: 2.0 sq. m (21.5 sq. ft)

Dexters

West Hampstead Sales
349 West End Lane
London
NW6 1LT
Sales
020 7644 9300

Energy Rating: D. We aim to make our particulars both accurate and reliable. However they are not guaranteed; nor do they form part of an offer or contract. If you require clarification on any points then please contact us, especially if you're traveling some distance to view. Please note that appliances and heating systems have not been tested and therefore no warranties can be given as to their good working order.

RICS Regulated
Estate Agent
and Letting Agent

dexters.co.uk