



Finchley Road, NW3

£835,000

We are delighted to offer this very large three bedroom apartment within this highly regarded mansion block with a passenger lift and communal garden. This apartment offers lots of natural light and is over 1000 sq ft.

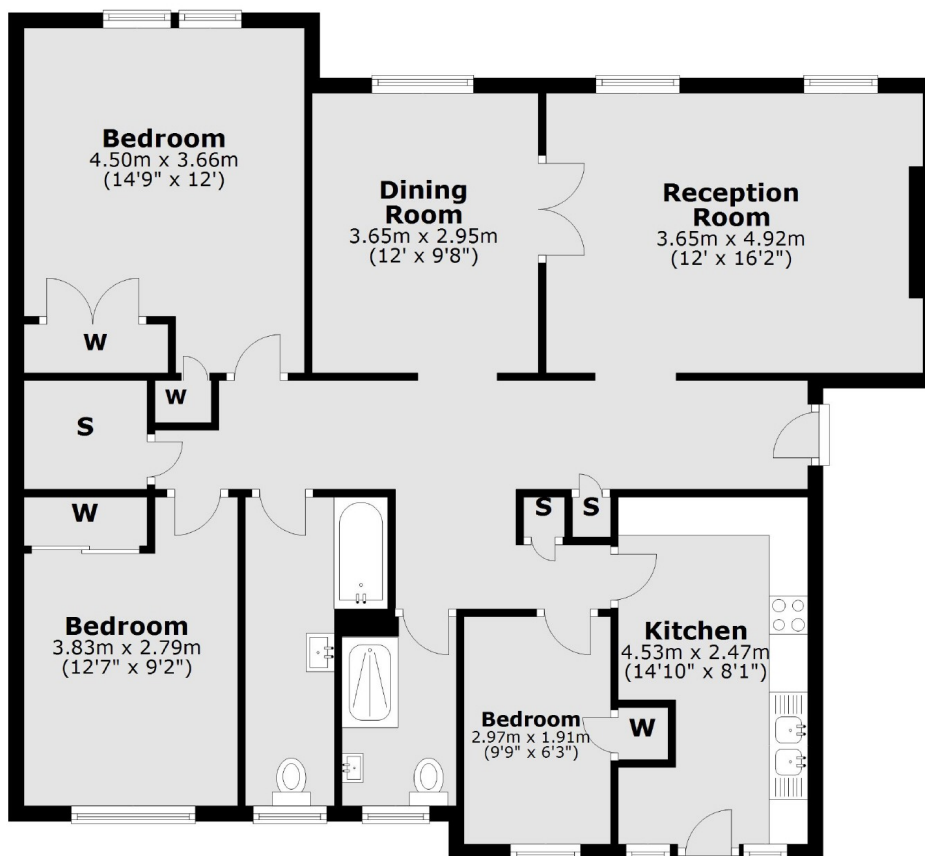
Mandeville Court is conveniently located to Finchley Road & Frognal Overground and Finchley Road tube station (Jubilee and Metropolitan lines) and excellent local amenities

Features

- Top Floor Apartment
- Three Bedrooms
- Share Of Freehold
- Passenger Lift
- Shared Garden
- No Chain

Finchley Road,
London, NW3

Fifth Floor



Total area: approx. 105.9 sq. metres (1140.1 sq. feet)

Dexters

West Hampstead Sales
349 West End Lane
London
NW6 1LT
Sales
020 7644 9300

Energy Rating: D. We aim to make our particulars both accurate and reliable. However they are not guaranteed; nor do they form part of an offer or contract. If you require clarification on any points then please contact us, especially if you're traveling some distance to view. Please note that appliances and heating systems have not been tested and therefore no warranties can be given as to their good working order.

 **RICS** | Regulated
Estate Agent
and Letting Agent

dexters.co.uk