



## Goldhurst Terrace, NW6

£799,950

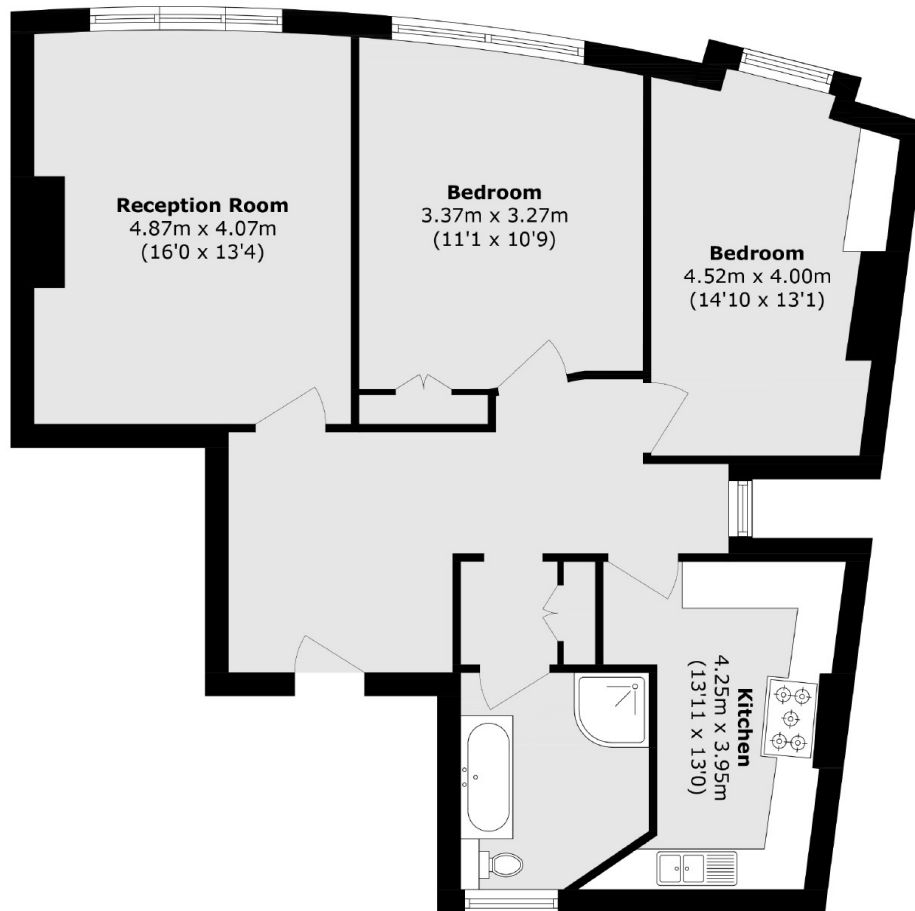
This very generous two double bedroom apartment is located on the first floor of this well located mansion block. The property has a communal garden and it will be sold with no onward chain.

Goldhurst Terrace is a popular residential street which is superbly located between trendy West End Lane and Finchley Road, with its array of shops, bars and restaurants.

### Features

- Two Double Bedrooms
- Communal Garden
- Mansion Block
- High Ceilings
- Close To Station
- No Onward Chain

# Goldhurst Terrace, London, NW6



Total area (approx.): 87.5 sq. m (941.8 sq. ft)

## Dexters

West Hampstead Sales  
349 West End Lane  
London  
NW6 1LT  
Sales  
020 7644 9300

Energy Rating: C. We aim to make our particulars both accurate and reliable. However they are not guaranteed; nor do they form part of an offer or contract. If you require clarification on any points then please contact us, especially if you're traveling some distance to view. Please note that appliances and heating systems have not been tested and therefore no warranties can be given as to their good working order.

 **RICS** | Regulated  
Estate Agent  
and Letting Agent

[dexters.co.uk](https://www.dexters.co.uk)