



Dyne Road, NW6

£799,950

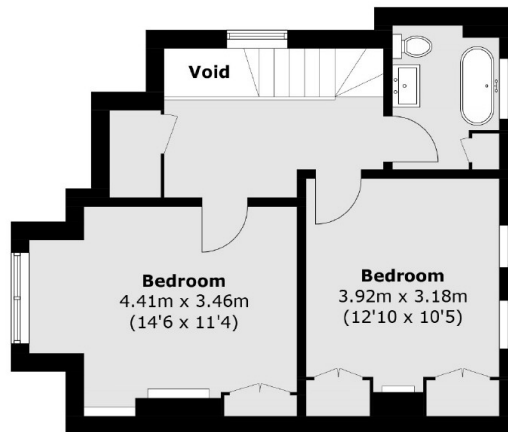
A charming and spacious upper floor maisonette with off street parking located on a popular tree-lined road in the Brondesbury conservation area. The property boasts an elegant reception room, a large well appointed modern fitted kitchen, generous storage and original features

Close by is the popular Salusbury Road with its array of boutique shops, restaurants, cafés and bars. Transport links are excellent with local stations including Brondesbury (Overground), Kilburn (Jubilee Line), West Hampstead (Thameslink) & Queens Park (Bakerloo & Overground).

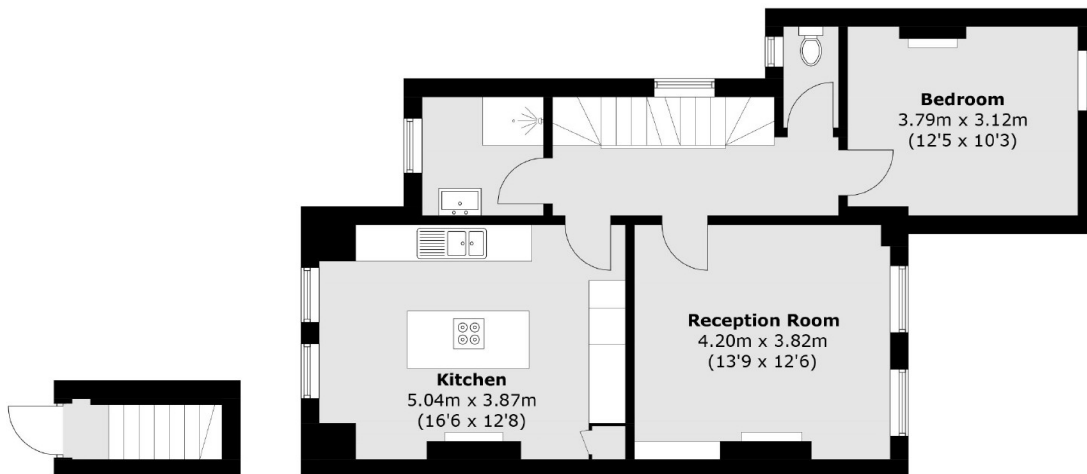
Features

- Three Bedrooms
- Two Bathrooms
- Split Level
- Separate Reception Room
- Share Of Freehold
- Off Street Parking

Dyne Road,
London, NW6



Second Floor



Ground Floor

First Floor

Total area (approx.): 107.4 sq. m (1,156.0 sq. ft)
(Excluding Void)