



## Maygrove Road, NW6

£485,000

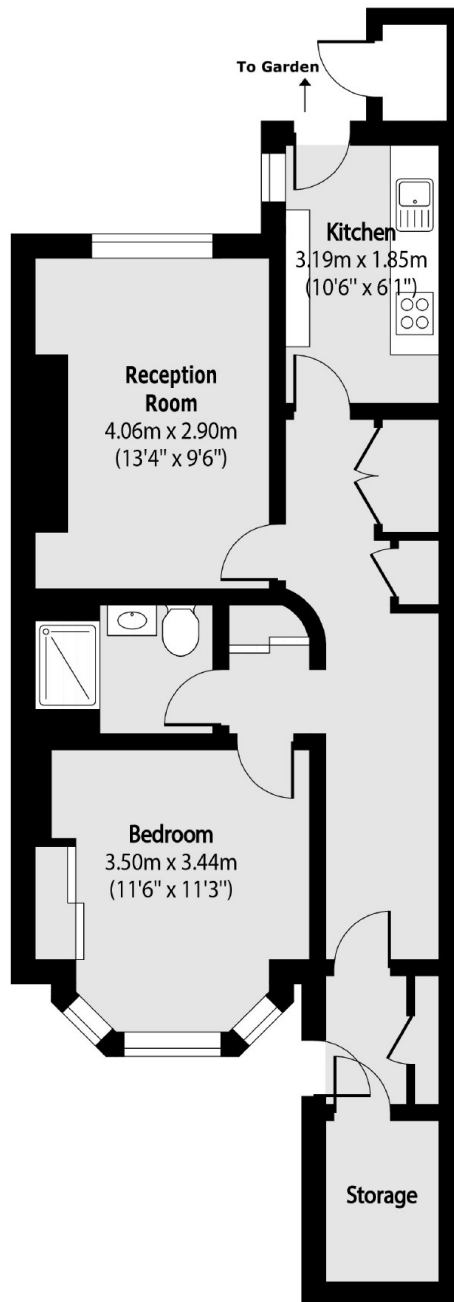
This one double bedroom flat features a private garden and will be sold with no onward chain. The property offers a large reception room, separate kitchen, fitted wardrobes, and has had recent cosmetic works done by the seller.

West Hampstead stations (Thameslink, Jubilee line and Overground lines) are a short walk away. This property is conveniently located for the multiple shops, restaurants and amenities of both West Hampstead and Kilburn.

### Features

- One Double Bedroom
- Patio Garden
- Fitted Storage
- Victorian Conversion
- Close To Amenities
- No Onward Chain

# Maygrove Road, London, NW6



Total area (approx): 53.67 sq m (578 sq. ft)  
(Excluding Storage)

## Dexters

West Hampstead Sales  
349 West End Lane  
London  
NW6 1LT  
Sales  
020 7644 9300

Energy Rating: D. We aim to make our particulars both accurate and reliable. However they are not guaranteed; nor do they form part of an offer or contract. If you require clarification on any points then please contact us, especially if you're traveling some distance to view. Please note that appliances and heating systems have not been tested and therefore no warranties can be given as to their good working order.

 **RICS** | Regulated  
Estate Agent  
and Letting Agent

[dexters.co.uk](https://www.dexters.co.uk)