



Maygrove Road, NW6

£425,000

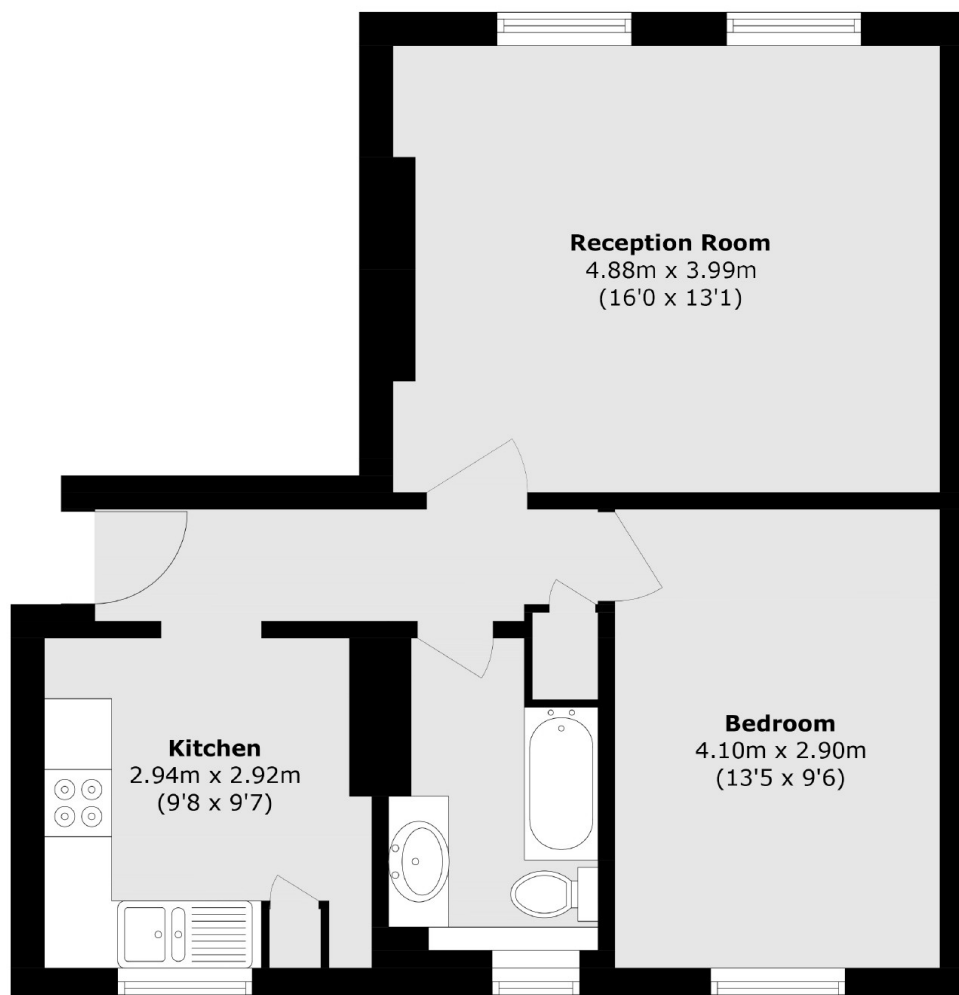
This one double bedroom flat is located on the second floor of a Victorian conversion and would make an ideal first time purchase. The property includes access to a communal terrace and it will be sold with no onward chain.

West Hampstead stations (Thameslink, Jubilee line, and Overground lines) are a short walk away. This property is conveniently located for the multiple shops, restaurants, and amenities of both West Hampstead and Kilburn.

Features

- One Bedroom
- Second Floor
- Separate Kitchen
- No Onward Chain
- High Ceilings
- Sash Windows

Maygrove Road,
London, NW6



Total area (approx.): 52.4 sq. m (564.0 sq. ft)

Dexters

West Hampstead Sales
349 West End Lane
London
NW6 1LT
Sales
020 7644 9300

Energy Rating: D. We aim to make our particulars both accurate and reliable. However they are not guaranteed; nor do they form part of an offer or contract. If you require clarification on any points then please contact us, especially if you're traveling some distance to view. Please note that appliances and heating systems have not been tested and therefore no warranties can be given as to their good working order.

 **RICS** | Regulated
Estate Agent
and Letting Agent

[dexters.co.uk](https://www.dexters.co.uk)