



Sumatra Road, NW6

£799,500

A very spacious three bedroom flat spread over two floors of this converted Victorian building offering over 1250 sq ft. The property benefits from direct access to a private garden and terrace, and it will be sold with no onward chain.

Sumatra Road is conveniently located just moments away from West End Lane which offers easy access to a variety of shops, bars and restaurants. Transport links include Thameslink, London Overground and West Hampstead tube station (Jubilee line).

Features

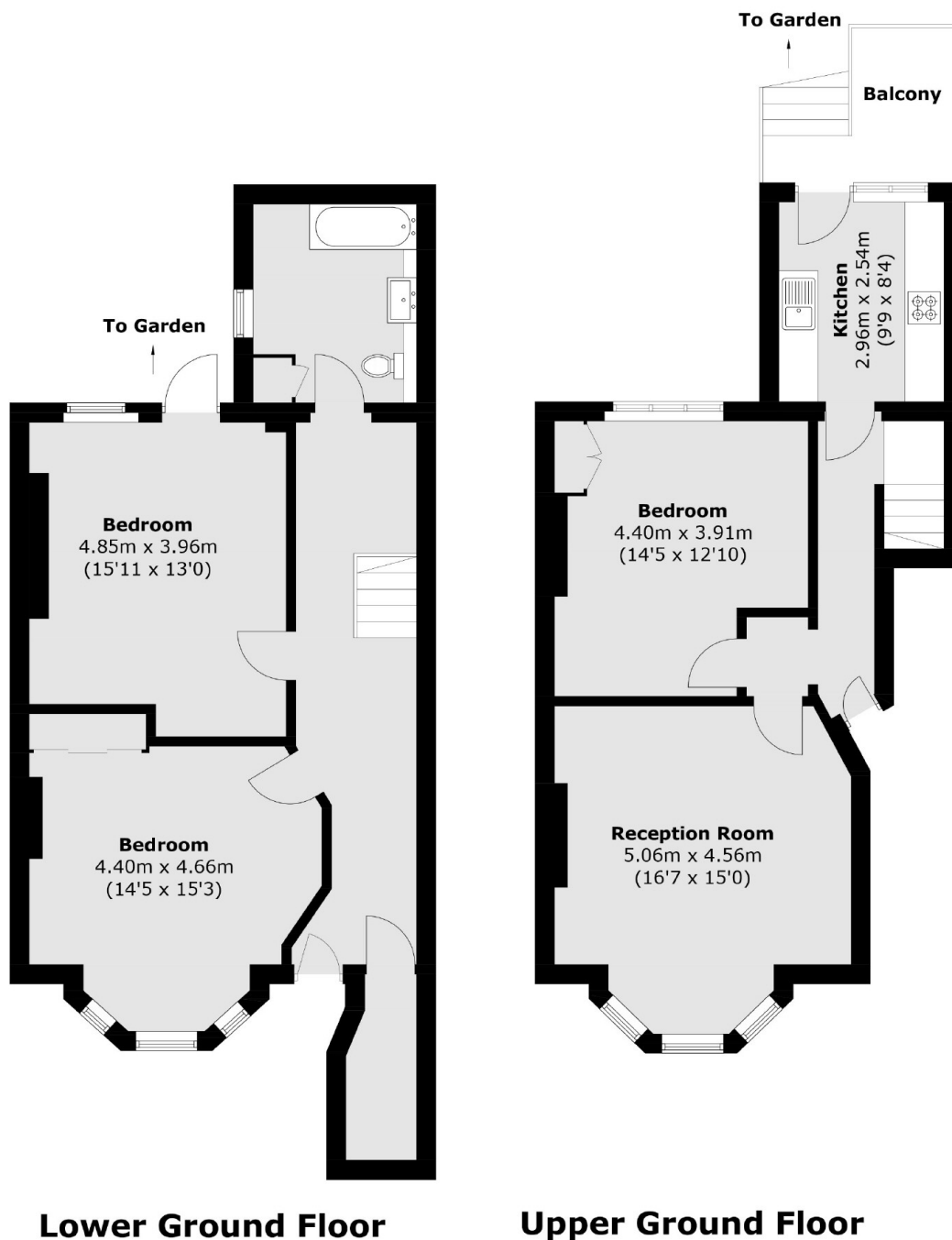
- Three Double Bedrooms
- Share Of Freehold
- Duplex Apartment
- Period Features
- Private Garden
- No Onward Chain



Sumatra Road, NW6



Sumatra Road, London, NW6



Total area (approx.): 117.2 sq. m (1,261.6 sq. ft)
Balcony : 5.0 sq. m (53.8 sq. ft)

Dexters

West Hampstead Sales
349 West End Lane
London
NW6 1LT
Sales
020 7644 9300

Energy Rating: C. We aim to make our particulars both accurate and reliable. However they are not guaranteed; nor do they form part of an offer or contract. If you require clarification on any points then please contact us, especially if you're traveling some distance to view. Please note that appliances and heating systems have not been tested and therefore no warranties can be given as to their good working order.

 **RICS** | Regulated
Estate Agent
and Letting Agent

[dexters.co.uk](https://www.dexters.co.uk)