



Sumatra Road, NW6

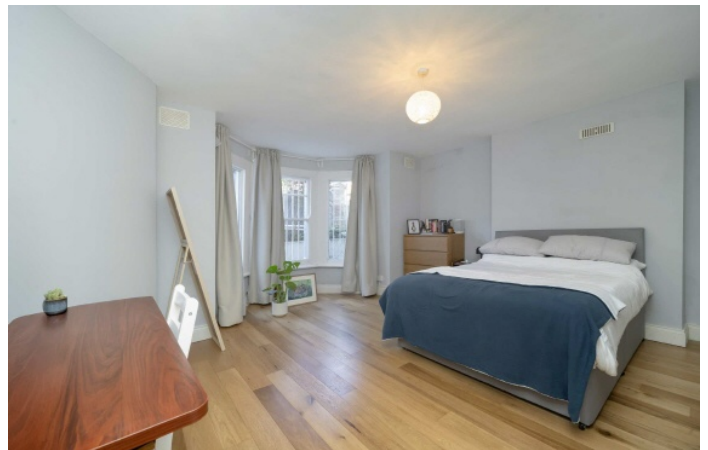
£850,000

A very spacious three bedroom flat spread over two floors of this converted Victorian building offering over 1250 sq ft. The property benefits from direct access to a private garden and terrace, share of freehold and it will be sold with no onward chain.

Sumatra Road is conveniently located just moments away from West End Lane which offers easy access to a variety of shops, bars and restaurants. Transport links include Thameslink, London Overground and West Hampstead tube station (Jubilee Line)

Features

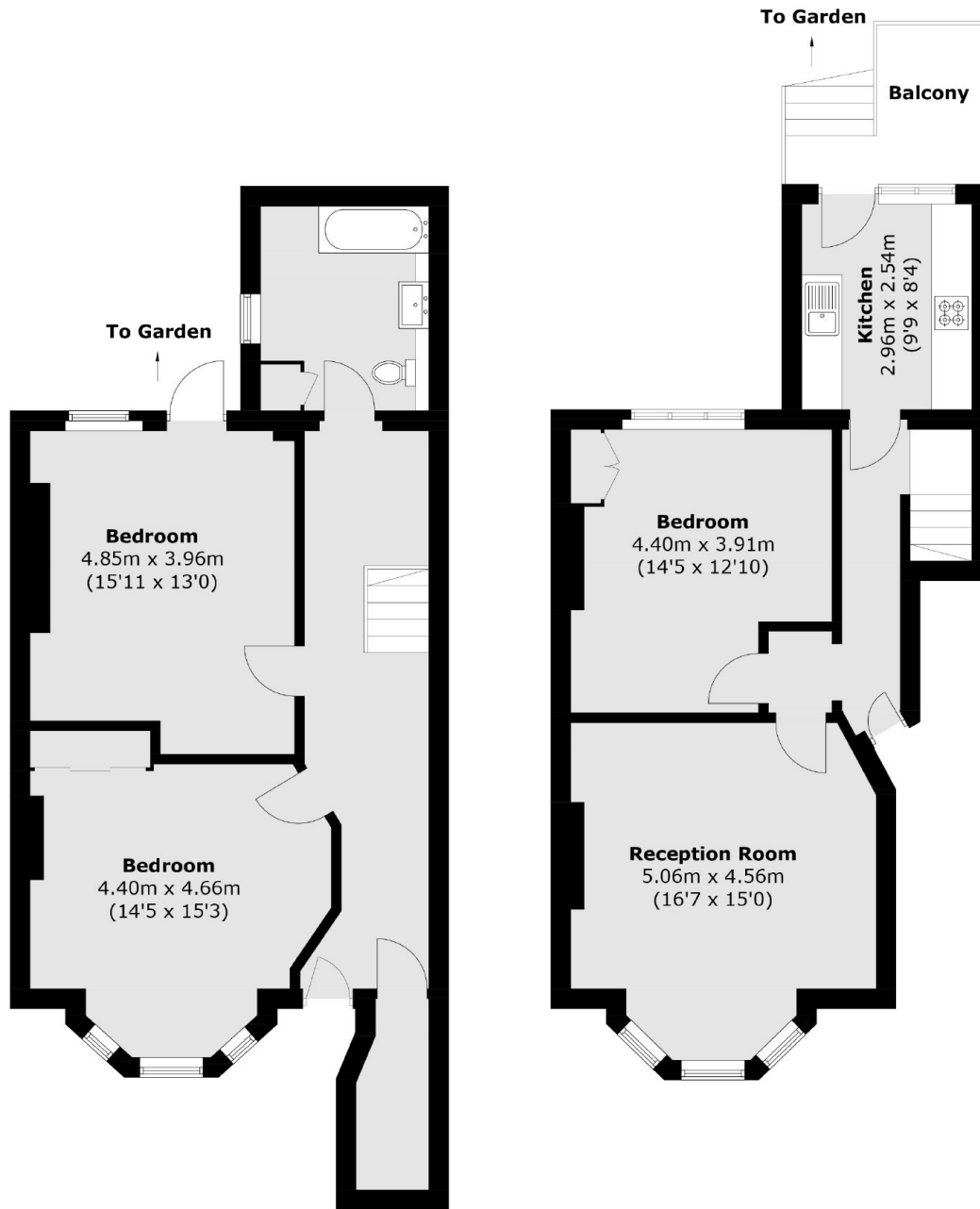
- Three Double Bedrooms
- Share Of Freehold
- Duplex Apartment
- Period Features
- Private Garden
- No Onward Chain



Sumatra Road, NW6



Sumatra Road,
London, NW6



Lower Ground Floor

Upper Ground Floor

Total area (approx.): 117.2 sq. m (1,261.6 sq. ft)
Balcony : 5.0 sq. m (53.8 sq. ft)