

## Sumatra Road, NW6

### £550,000

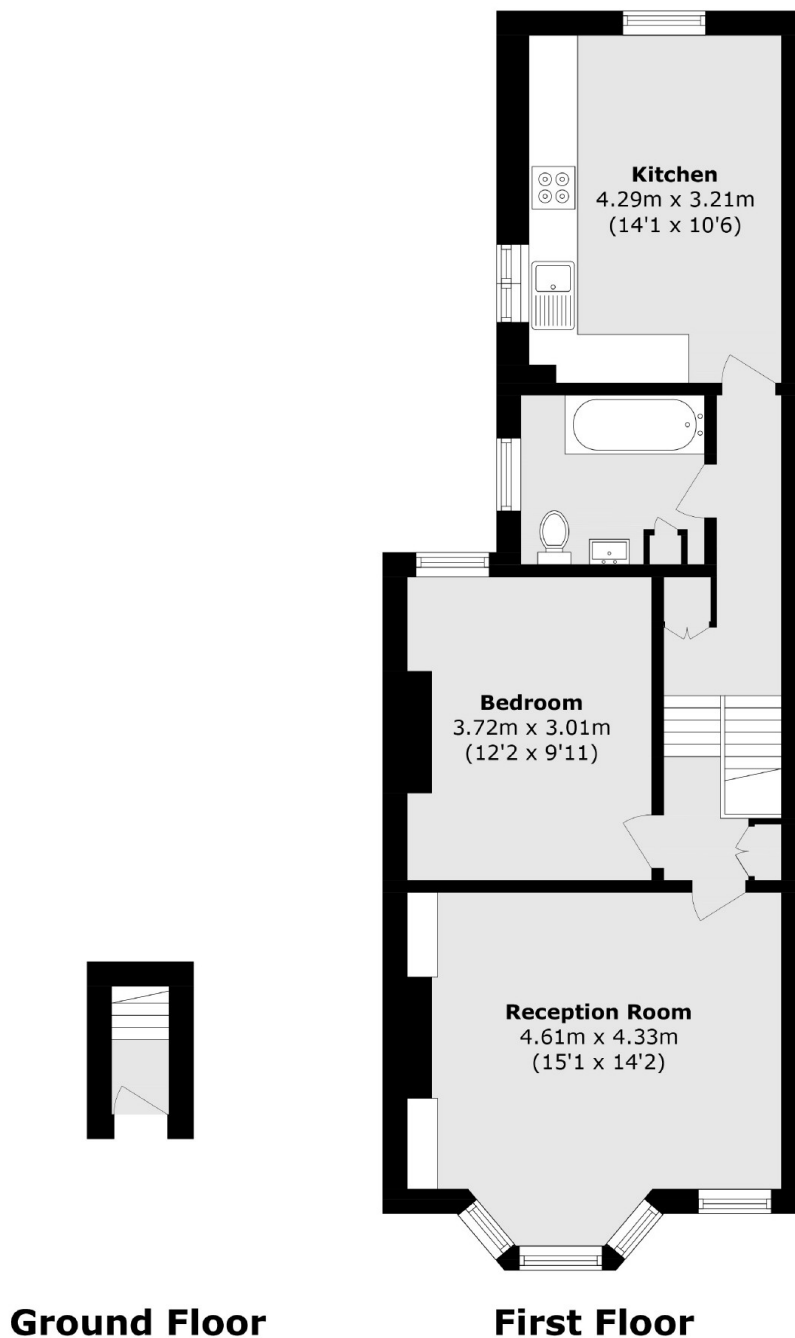
This very impressive one bedroom flat offers over 620 sq ft and it has been cleverly designed to create the perfect balance of modern and period charm. The property is located on the first floor of this converted Victorian house and it will be sold with no onward chain.

Sumatra Road is conveniently located off of vibrant West End Lane which offers easy access to the variety of shops, bars and restaurants including all the versatile transport links (Thameslink, London Overground and West Hampstead tube station - Jubilee line).

### Features

- One Double Bedroom
- First Floor
- High Ceilings
- Recently Refurbished
- Integrated Appliances
- No Onward Chain

# Sumatra Road, London, NW6



Total area (approx.): 58.5 sq. m (629.6 sq. ft)

## Dexters

West Hampstead Sales  
349 West End Lane  
London  
NW6 1LT  
Sales  
020 7644 9300

Energy Rating: C. We aim to make our particulars both accurate and reliable. However they are not guaranteed; nor do they form part of an offer or contract. If you require clarification on any points then please contact us, especially if you're traveling some distance to view. Please note that appliances and heating systems have not been tested and therefore no warranties can be given as to their good working order.

 **RICS** | Regulated  
Estate Agent  
and Letting Agent

[dexters.co.uk](https://www.dexters.co.uk)