



Burton Road, NW6
£985,000

Dexters



Burton Road, NW6

This very impressive three bedroom garden flat is set within this converted Victorian building and it has been cleverly designed and finished to a very high standard by the current owners. The property is share of freehold and it will be sold with no onward chain.

There is a very sizeable principal bedroom with Ensuite to the front of the house, with high-ceilings and a bay window. There is a further double bedroom and a family bathroom on this floor, and you will find the third double bedroom on the lower ground floor.

You will be blown away by the design of the extended kitchen/reception room with the exposed bricks and beams offering the blend of modern and period charm.

To top it off there is off-street parking on the drive, and the private garden has been recently landscaped by the current owners.

Burton Road is ideally located to all the amenities of Kilburn High Road has to offer, with Brondesbury Overground and Kilburn tube station (Jubilee line) close by.

Features

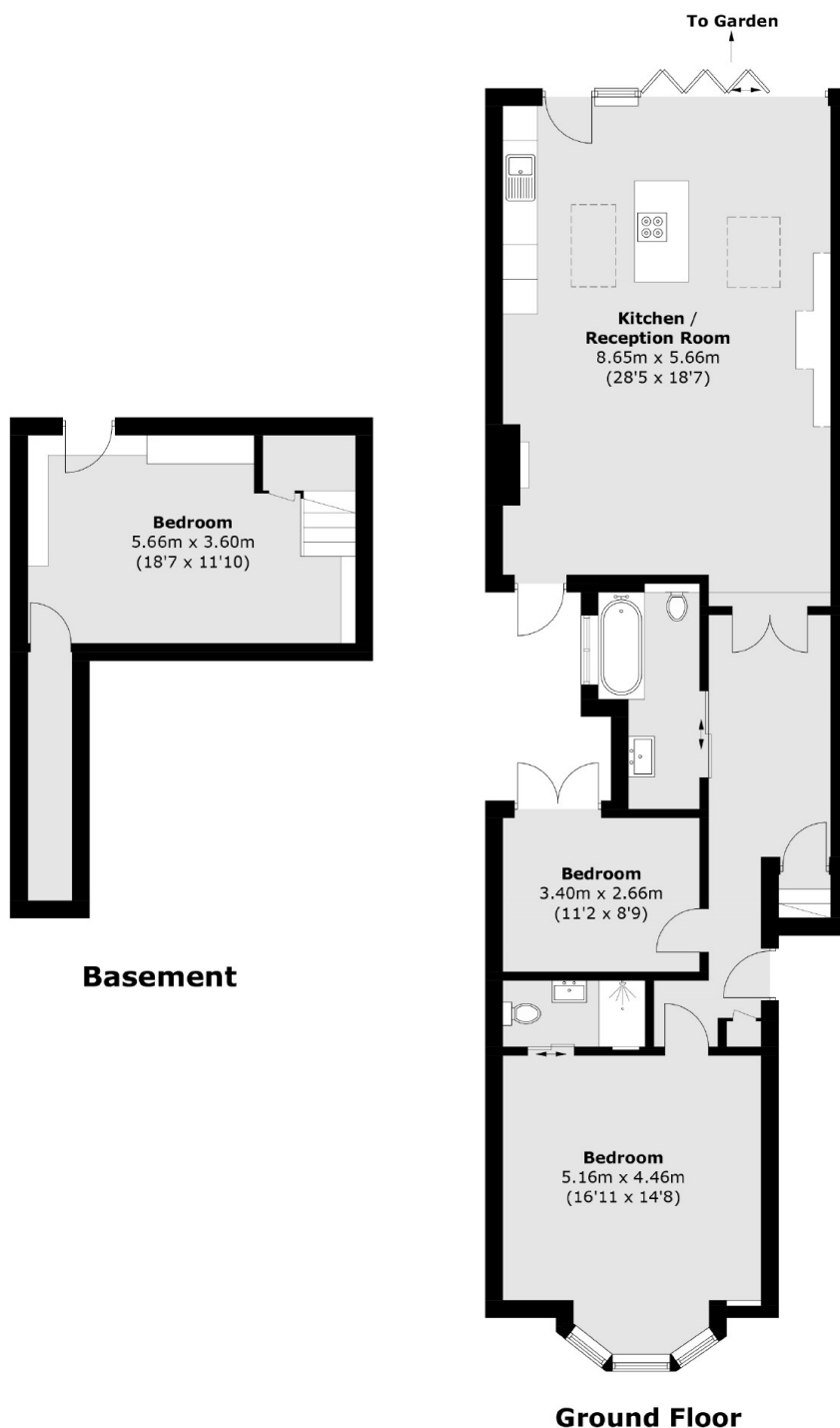
- Three Bedrooms
- Two Bathrooms
- Private Garden
- Share Of Freehold
- Victorian Conversion
- Off-Street Parking







Burton Road,
London, NW6



Total area (approx.): 127.9 sq. m (1,376.6sq. ft)
(Including Basement)

Dexters

West Hampstead Sales
349 West End Lane
London
NW6 1LT
Sales
020 7644 9300

Energy Rating: D. We aim to make our particulars both accurate and reliable. However they are not guaranteed; nor do they form part of an offer or contract. If you require clarification on any points then please contact us, especially if you're traveling some distance to view. Please note that appliances and heating systems have not been tested and therefore no warranties can be given as to their good working order.

RICS | Regulated
Estate Agent
and Letting Agent

dexters.co.uk