



Burton Road, NW6  
£995,000

**Dexters**



## Burton Road, NW6

This very impressive three bedroom garden flat is set within this converted Victorian building and it has been cleverly designed and finished to a very high standard by the current owners. The property is a share of freehold and it will be sold with no onward chain.

There is a very sizeable principle bedroom to the front of the house with high ceilings, bay window, ensuite and further double bedroom, family bathroom on this floor. You will find the third double bedroom on the lower ground floor.

You will be blown away by the design of the extended kitchen/reception room with the exposed bricks and beams offering the blend of modern and period charm.

To top it off there is off street parking on the drive and the private garden has been recently landscaped by the current owners.

Burton Road is ideally located to all the amenities of Kilburn High Road has to offer, with Brondesbury Overground and Kilburn tube station (jubilee line) close by.

### Features

- Three Bedrooms
- Two Bathrooms
- Private Garden
- Share Of Freehold
- Victorian Conversion
- Off Street Parking





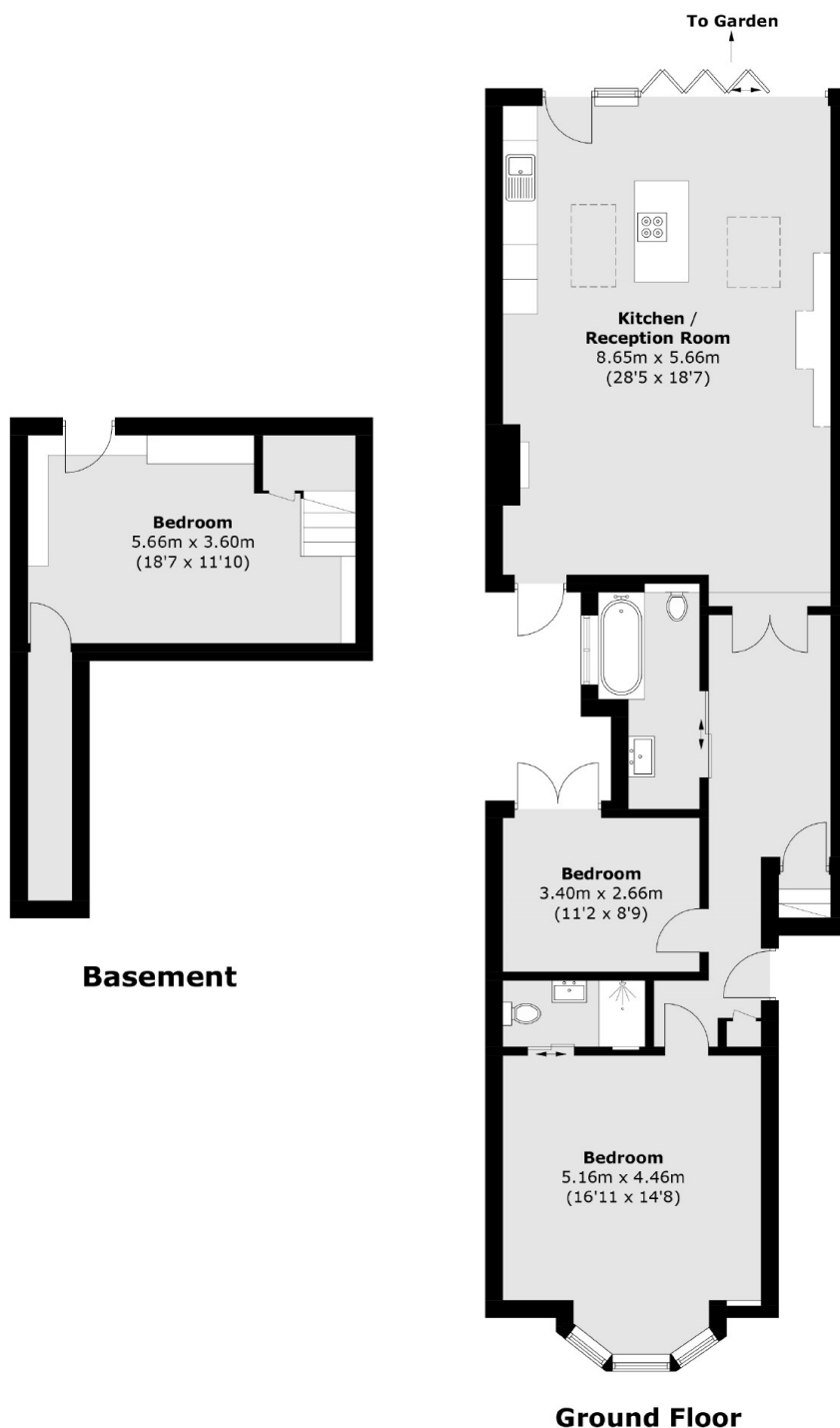








Burton Road,  
London, NW6



Total area (approx.): 127.9 sq. m (1,376.6sq. ft)  
(Including Basement)

**Dexters**

West Hampstead Sales  
349 West End Lane  
London  
NW6 1LT  
Sales  
020 7644 9300

Energy Rating: D. We aim to make our particulars both accurate and reliable. However they are not guaranteed; nor do they form part of an offer or contract. If you require clarification on any points then please contact us, especially if you're traveling some distance to view. Please note that appliances and heating systems have not been tested and therefore no warranties can be given as to their good working order.

**RICS** | Regulated  
Estate Agent  
and Letting Agent

dexters.co.uk