

Sherriff Road, NW6
£799,950

Dexters



Sherriff Road, NW6

This stunning, modern two bedroom split level flat, complete with both a private garden and terrace, is a rare find in West Hampstead. Offered with a share of the freehold and available chain-free, this property is ready for you to move in.

Sherriff Road is ideally located just a short walk away from the variety of shops, restaurants and transport links that West End Lane has to offer. Transport links include West Hampstead Underground (0.2 miles), Overground (0.3 miles) and Thameslink (0.3 miles).

Features

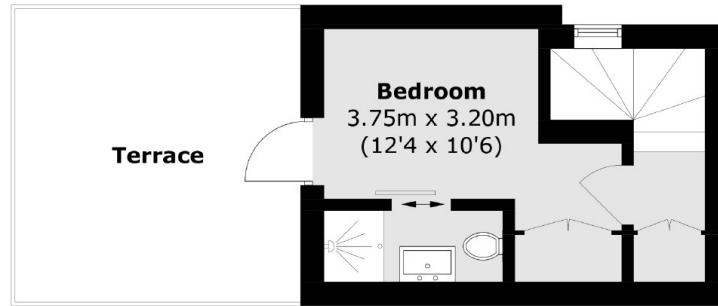
- Private Garden and Terrace
- Two Bedrooms
- Two Bathrooms plus W/C
- Walk-in Wardrobe/Study
- Excellent Transport Links
- Share Of Freehold



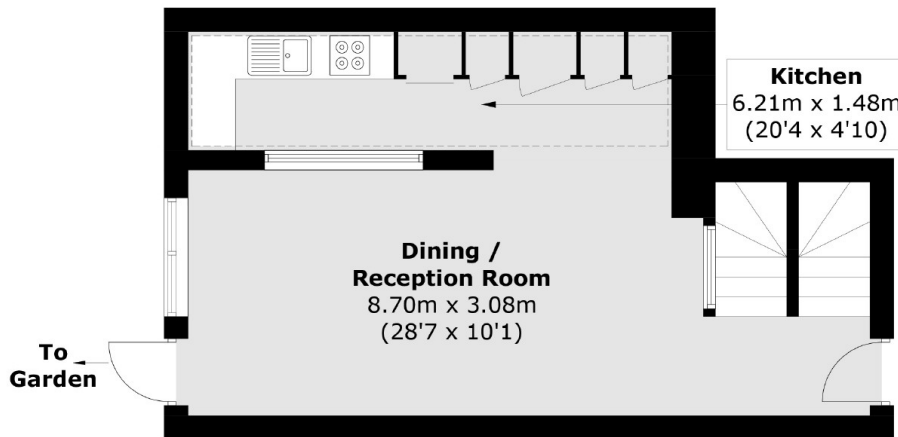




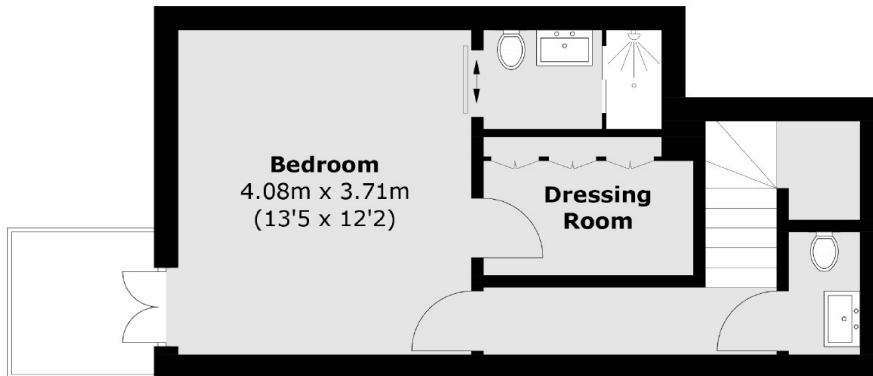
Sherriff Road,
London, NW6



First Floor



Ground Floor



Lower Ground Floor

Total area (approx.): 84.7 sq. m (911.6 sq. ft)
Terrace (approx.): 13.3 sq. m (143.2 sq. ft)