



Kilburn High Road, NW6  
£1,490,000

**Dexters**



## Kilburn High Road, NW6

This stylish fifth floor penthouse offers over 1,300 sq ft of beautifully designed living space, featuring three spacious bedrooms and two elegant bathrooms.

The home is equipped with built in air conditioning throughout, including all rooms and the living room, ensuring comfort year round. Extra benefits include a dedicated server managing all smart home automation's and an advanced double water filtration system for lime free and high quality drinking water

The property boasts a generous 600 sq ft southeast-facing terrace, showcasing breathtaking panoramic views of lush parks, charming suburbs, and iconic London landmarks, creating the perfect spot for relaxation or entertaining.

Situated near Kilburn High Road, this location offers excellent access to Jubilee Line and Overground stations, along with a great selection of shops and dining options. The building also backs onto Grange Park and its tennis courts, providing a lovely green space to enjoy.

### Features

- Penthouse apartment
- Three bedrooms
- Two bathrooms
- Built-in air conditioning
- South-east facing roof terrace
- Stunning panoramic views



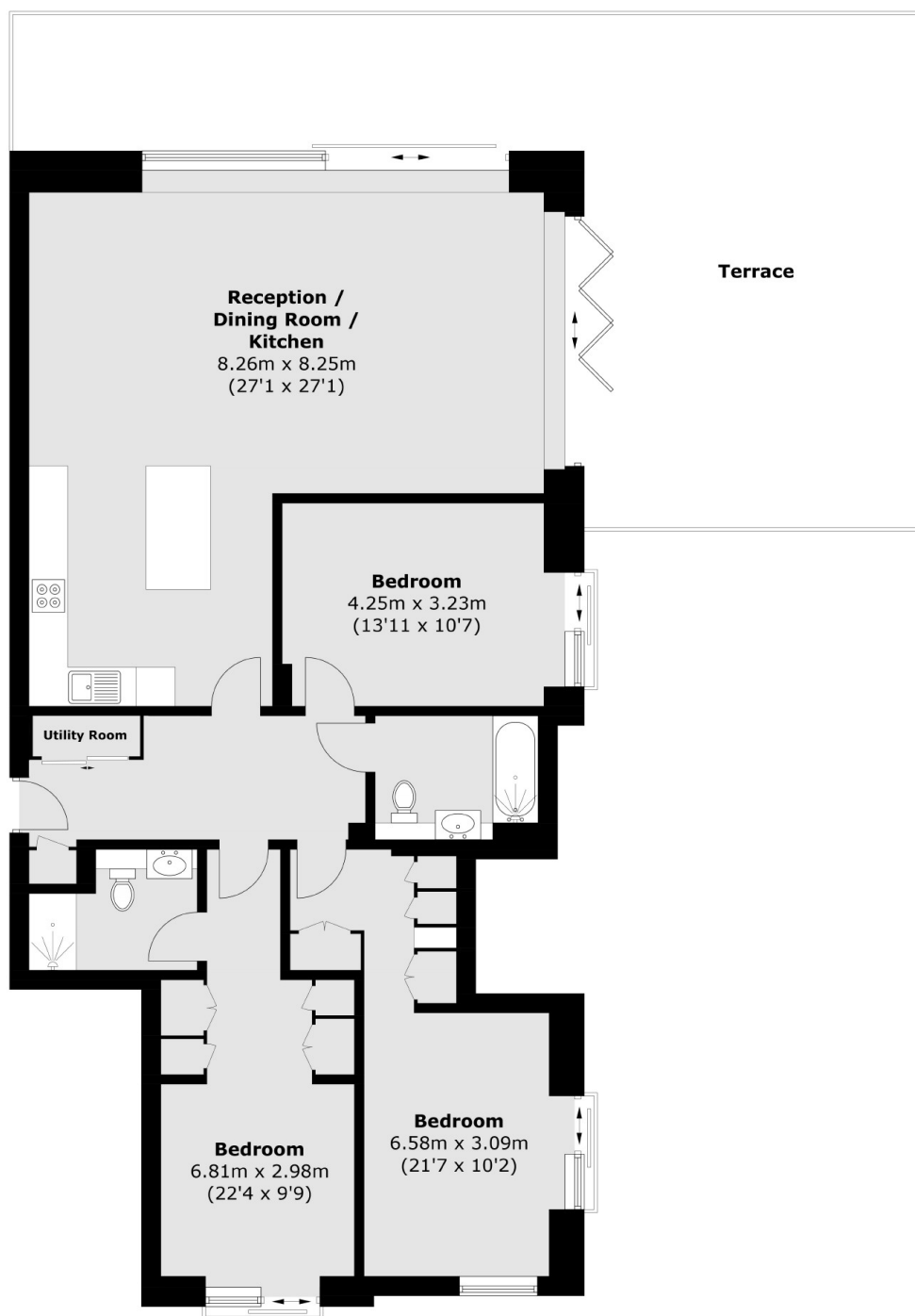








Kilburn High Road,  
London, NW6



Total area (approx.): 127.8 sq. m (1,375.6 sq. ft)  
Terrace (approx.): 59.9 sq. m (644.7 sq. ft)

**Dexters**

West Hampstead Sales  
349 West End Lane  
London  
NW6 1LT  
Sales  
020 7644 9300

Energy Rating: B. We aim to make our particulars both accurate and reliable. However they are not guaranteed; nor do they form part of an offer or contract. If you require clarification on any points then please contact us, especially if you're traveling some distance to view. Please note that appliances and heating systems have not been tested and therefore no warranties can be given as to their good working order.

**RICS** | Regulated  
Estate Agent  
and Letting Agent

[dexters.co.uk](http://dexters.co.uk)