



Kings Gardens, NW6

£900,000

A well proportioned three bedroom apartment set within this attractive mansion block. This property has two bathrooms, a semi open plan kitchen/ reception room and a private balcony.

Kings Gardens is ideally located between South Hampstead and West Hampstead giving excellent transport links across London. West End Lane has many restaurants, cafes, and bars all within easy reach.

Features

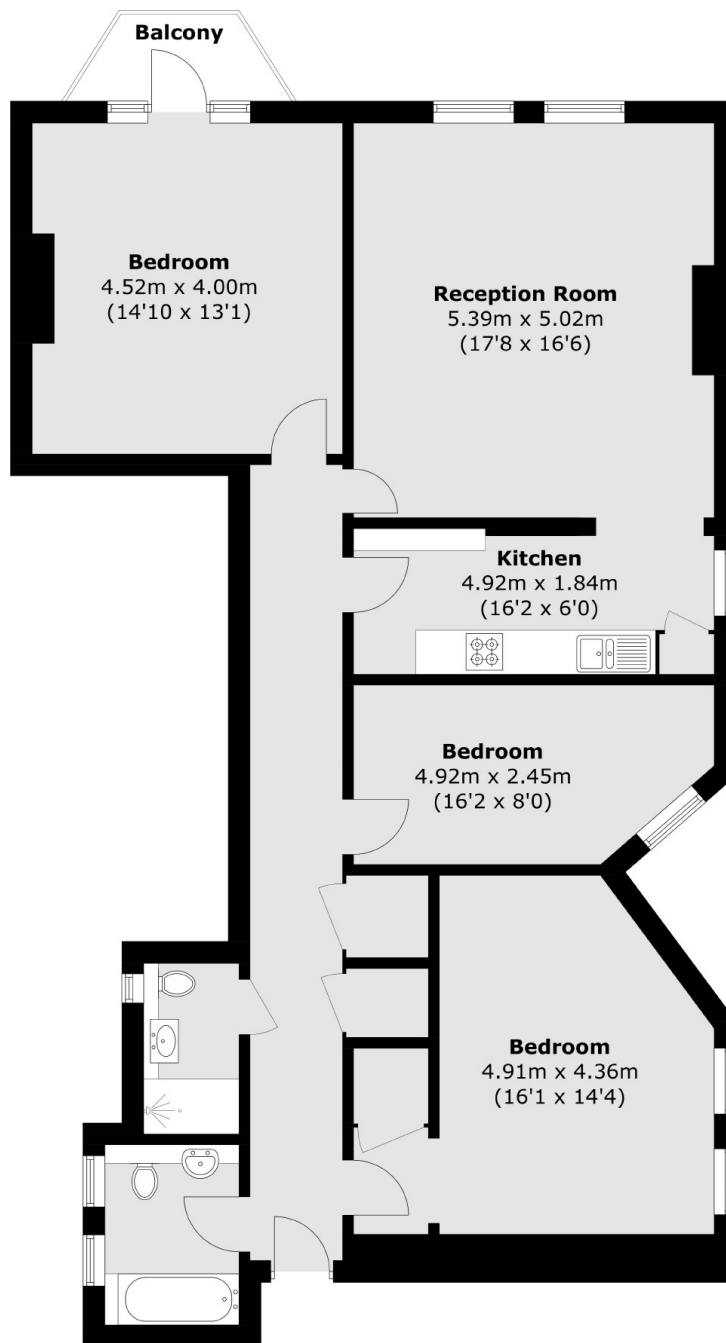
- Three Double Bedrooms
- Two Bathrooms
- Private Balcony
- Mansion Block
- Excellent Transport Links
- Porter



Kings Gardens, NW6



Kings Gardens, London, NW6



Total area (approx.): 115.6 sq. m (1,244.3 sq. ft)
Balcony: 2.8 sq. m (30.1 sq. ft)

Dexters

West Hampstead Sales
349 West End Lane
London
NW6 1LT
Sales
020 7644 9300

Energy Rating: C. We aim to make our particulars both accurate and reliable. However they are not guaranteed; nor do they form part of an offer or contract. If you require clarification on any points then please contact us, especially if you're traveling some distance to view. Please note that appliances and heating systems have not been tested and therefore no warranties can be given as to their good working order.

 **RICS** | Regulated
Estate Agent
and Letting Agent

[dexters.co.uk](https://www.dexters.co.uk)