

Hodford Road, NW11

£459,000

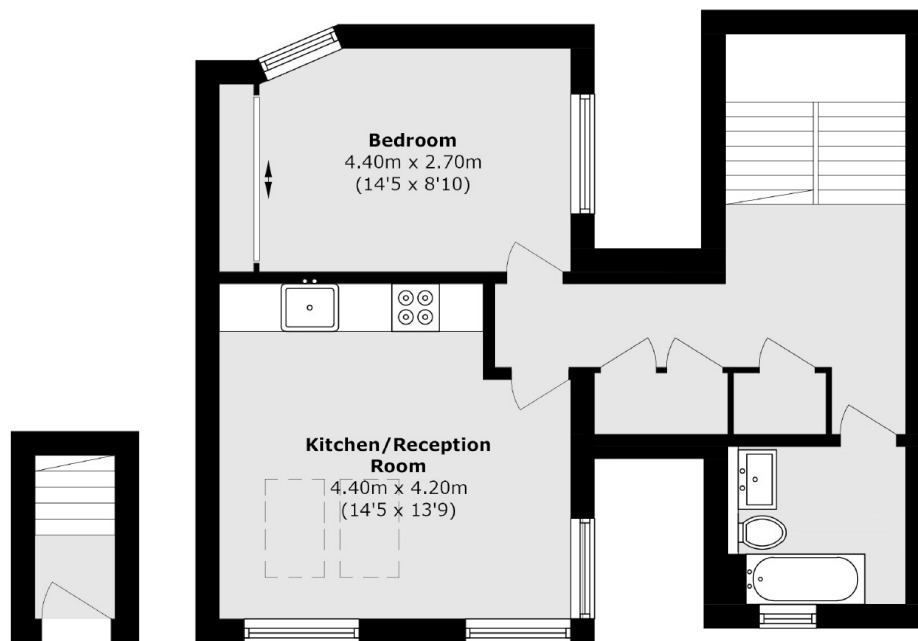
This very impressive one bedroom apartment has its own entrance and is located on the first floor of this modern building. The property is located in a secure gated development and it benefits from communal gardens.

Hodford Road is perfectly located for easy access to Golders Green underground station (Northern line) and all the shops and amenities of Golders Green Road with Hampstead Heath also nearby.

Features

- One Double Bedroom
- Modern Apartment
- Own Entrance
- Gated Development
- Communal Garden
- Integrated Appliances

Hodford Road,
London, NW11



Ground Floor

First Floor

Total area (approx.): 53.1 sq. m (571.5 sq. ft)

Dexters

West Hampstead Sales
349 West End Lane
London
NW6 1LT
Sales
020 7644 9300

Energy Rating: B. We aim to make our particulars both accurate and reliable. However they are not guaranteed; nor do they form part of an offer or contract. If you require clarification on any points then please contact us, especially if you're traveling some distance to view. Please note that appliances and heating systems have not been tested and therefore no warranties can be given as to their good working order.

 **RICS** | Regulated
Estate Agent
and Letting Agent

[dexters.co.uk](https://www.dexters.co.uk)