



Westbere Road, NW2

£390,000

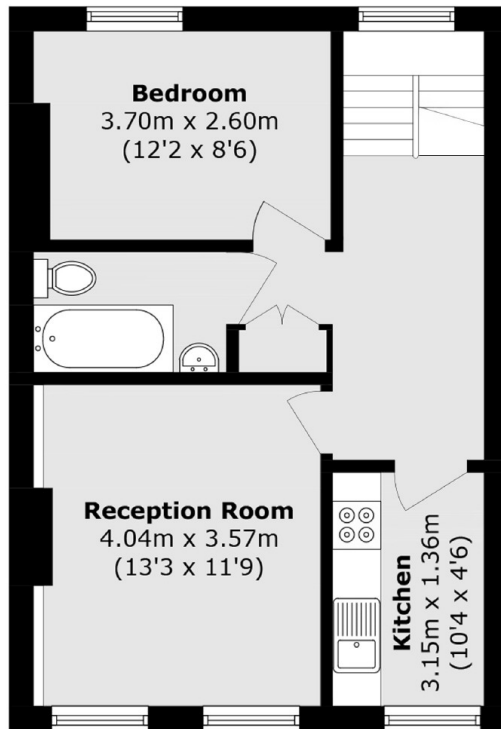
The one double bedroom flat has been recently refurbished and is located on the top floor of this converted Victorian building. The property benefits from a share of freehold and no onward chain.

Located on this popular residential road only a short walk to West Hampstead's transport links including Jubilee, Overground and Thameslink stations.

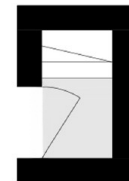
Features

- One Double Bedroom
- Share Of Freehold
- Top Floor
- Recently Refurbished
- Victorian Building
- No Onward Chain

Westbere Road,
London, NW2



Top Floor



Ground Floor

Total area (approx.): 48.4 sq. m (520.9 sq. ft)

Dexters

West Hampstead Sales
349 West End Lane
London
NW6 1LT
Sales
020 7644 9300

Energy Rating: TBC. We aim to make our particulars both accurate and reliable. However they are not guaranteed; nor do they form part of an offer or contract. If you require clarification on any points then please contact us, especially if you're traveling some distance to view. Please note that appliances and heating systems have not been tested and therefore no warranties can be given as to their good working order.

 **RICS** | Regulated
Estate Agent
and Letting Agent

[dexters.co.uk](https://www.dexters.co.uk)