



Ravenshaw Street, NW6

£1,295,000

Dexters



Ravenshaw Street, NW6

This three bedroom Victorian house has heaps of potential and it would make an ideal family home. The property is filled with period charm and it will be sold with no onward chain.

As you enter the property there is a large reception and dining room which benefits from high ceilings and period charm, two fireplaces and lots of Victorian features.

The kitchen is to the rear of the property and there are doors leading out onto the paved garden.

There are two double bedrooms on the first floor, both with fitted wardrobes and a study leading to the family bathroom. You will find a further double bedroom on the second floor with very generous eave storage.

Ravenshaw Street is conveniently located near to the amenities of Mill Lane and West End Lane with its versatile transport links which include the Jubilee Line, London Overground and Thameslink.

Features

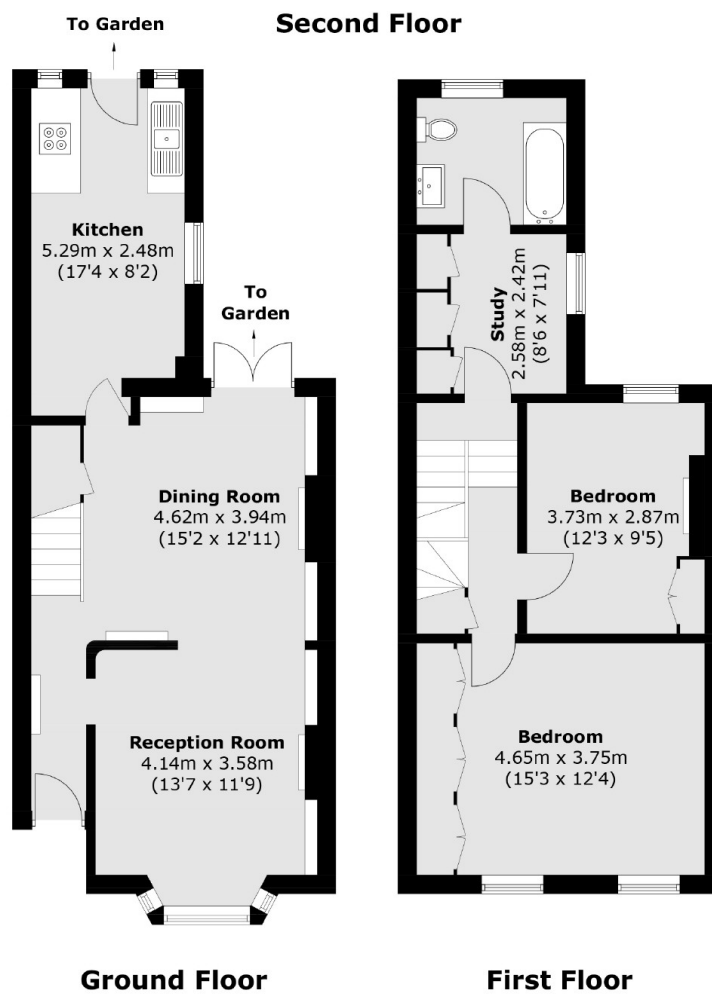
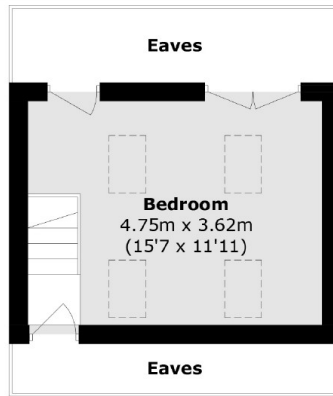
- Victorian House
- Three Bedrooms
- Study
- Close To Station
- Period Charm
- No Onward Chain







Ravenshaw Street,
London, NW6



Ground Floor

First Floor

Total area (approx.): 113.4 sq. m (1,220.6 sq. ft)
(Excluding Eaves)