



## Christchurch Avenue, NW6 £750,000

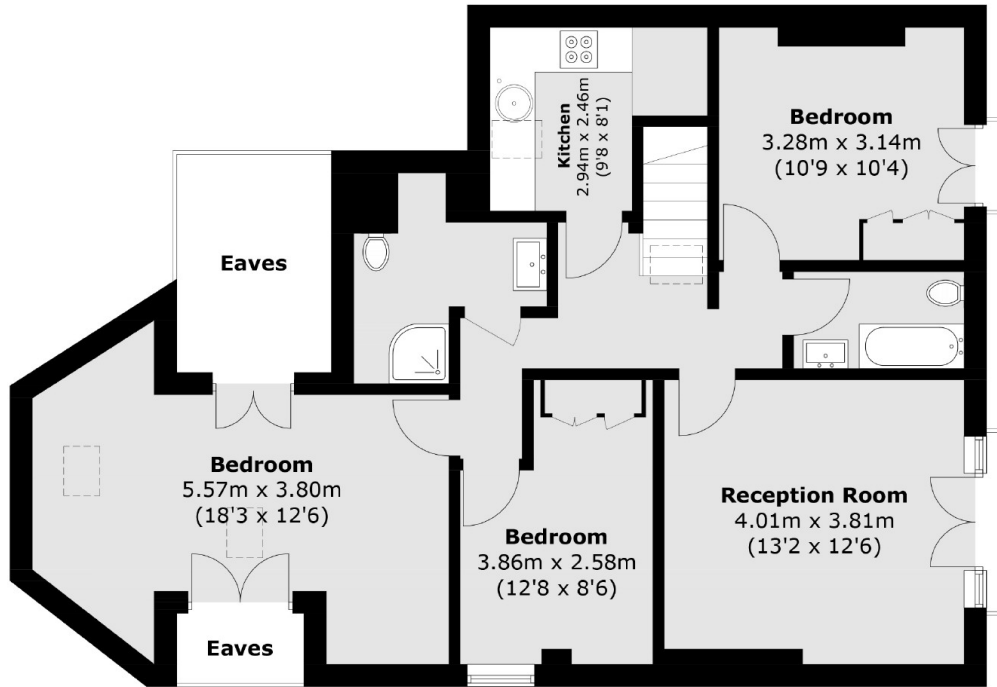
This three bedroom flat has been recently renovated and is located on the top floor of this converted Victorian building. The property has a private garden with freeholder consent to erect garden accommodation, two bathrooms and it will be sold with no onward chain.

Christchurch Avenue is located a short distance from the local shops and amenities of Kilburn High Road. The closest underground station is Kilburn (Jubilee line) and Brondesbury (Overground).

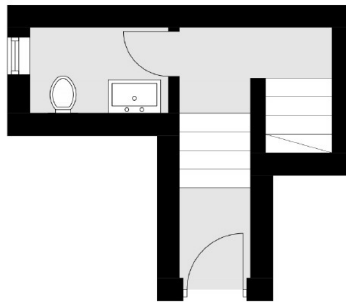
### Features

- Three Bedrooms
- Two Bathrooms
- Private Garden
- Recently Refurbished
- Close To Station
- No Onward Chain

Christchurch Avenue,  
London, NW6



**Second Floor**



**First Floor**

Total area (approx.): 87.2 sq. m (938.6 sq. ft)  
(Excluding Eaves)