



West Hampstead Mews, NW6
£1,025,000

Dexters



West Hampstead Mews, NW6

A rare opportunity to purchase a unique, beautifully finished Victorian mews home in the heart of bustling West Hampstead with an additional garden office. Tucked away on a charming cobbled thoroughfare located moments away from West Hampstead High Street.

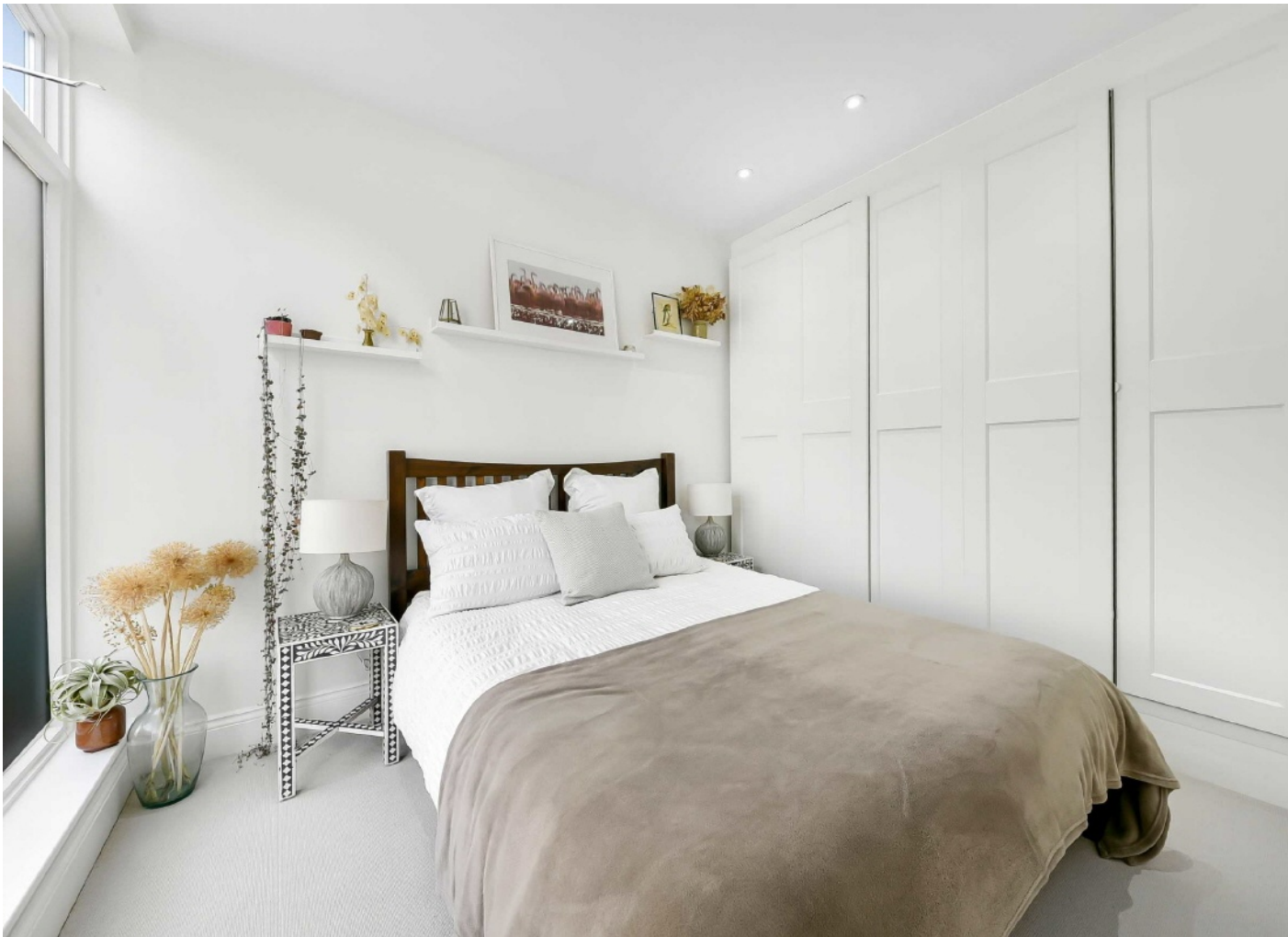
This property has been beautifully finished by its current owner. The property boasts two well proportioned double bedrooms, both with built in wardrobes and big windows allowing natural light to flood in and underfloor heating throughout. Two top spec bathrooms, one shared bathroom as well as one en-suite bathroom. Downstairs leads down to a beautifully appointed open plan kitchen, dining and lounge area. High quality entertaining and living area featuring sliding doors overlooking the south facing garden.

The garden has been cleverly designed by a Chelsea Flower Show award winning designer. There is a beautifully finished outbuilding, currently used as a gym, but would also make for the perfect outdoor office. There is an additional outdoor BBQ, dining area and the perfect spot for hosting and entertaining guests.

Ideally located for the multiple train stations of West Hampstead, the popular West End Lane with its independent shops, trendy bars and restaurants.

Features

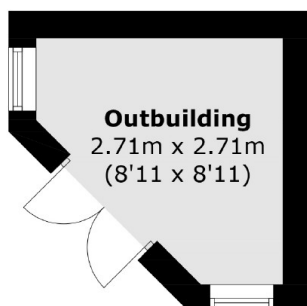
- Two Double Bedrooms
- Two Bathrooms
- Private Garden
- Recently Refurbished
- Garden Office
- Underfloor heating







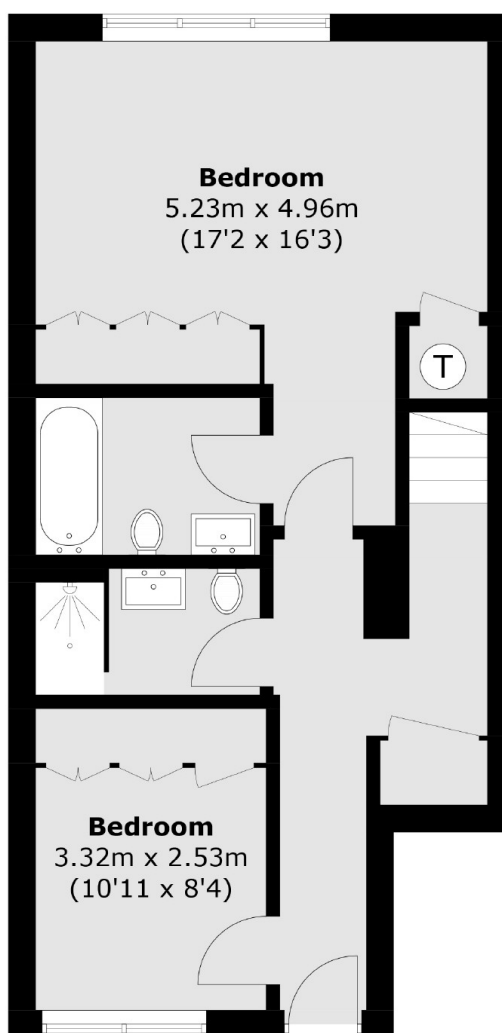
West Hampstead Mews, London, NW6



**(Not Shown In Actual
Location / Orientation)**



Lower Ground Floor



Ground Floor

Total area (approx.): 83.6 sq. m (899.8 sq. ft)
Outbuilding area (approx.): 5.9 sq. m (63.5 sq. ft)