



## Iverson Road, NW6

### £425,000

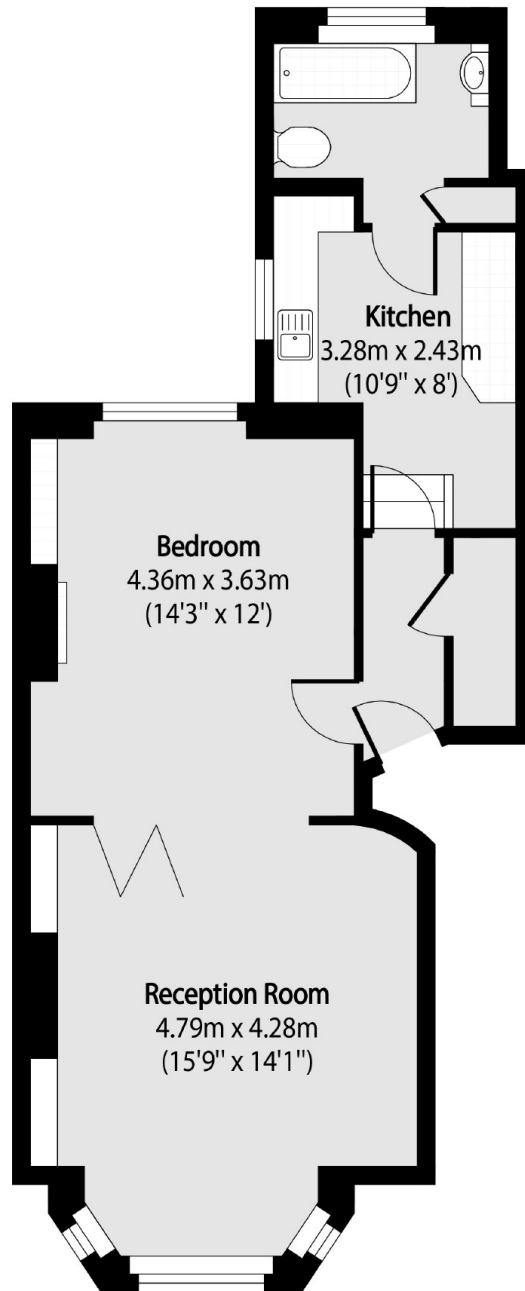
A bright and spacious one bedroom apartment located on the raised ground floor of this well-maintained period conversion. This property benefits from original period features and is conveniently located to amenities.

Iverson Road is popular residential street close to a number of fantastic transport links including West Hampstead tube station (Jubilee line, London Overground and Thameslink) and numerous bus routes into the City.

### Features

- One Bedroom
- Raised Ground Floor
- Share of Freehold
- Close to Amenities
- Separate Kitchen
- No Upper Chain

# Iverson Road, London, NW6



Total area (approx): 51.92 sq m (559 sq. ft)