



Westbere Road, NW2

£1,550,000

Dexters



Westbere Road, NW2

This impressive four bedroom, semi-detached house has been in the same family for almost 120 years. With over 2,000 sq ft of internal living space this is the perfect opportunity to create an ideal family home.

The ground floor comprises a stunning double reception room with high ceilings and beautiful original fireplaces. To the rear you will find a large dining room which leads onto a mature garden and a separate kitchen .

On the first floor there is the principle suite with plenty of built in storage and an en-suite bathroom. There are a further three bedrooms on this floor with another family bathroom.

This property will make the ideal family home, arranged over two floors with two bathrooms and a large garden, there is also potential to extend into the loft (STPP).

Located on this popular residential road only a short walk to West Hampstead's transport links including Jubilee, Overground and Thameslink stations.

Features

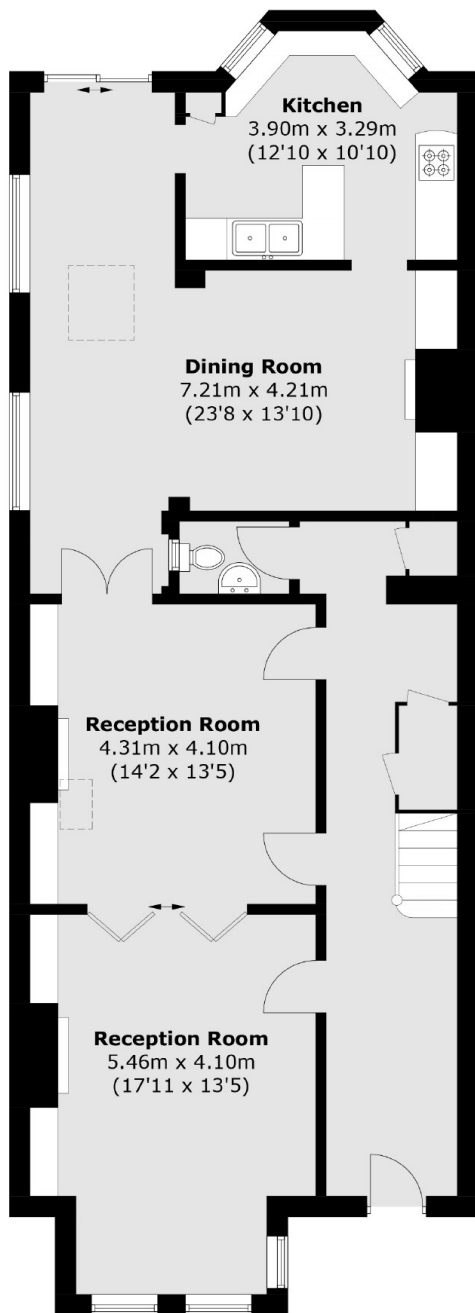
- Four Bedrooms
- Mature Garden
- Semi-Detached
- Freehold House
- No Onward Chain
- Lots of Potential



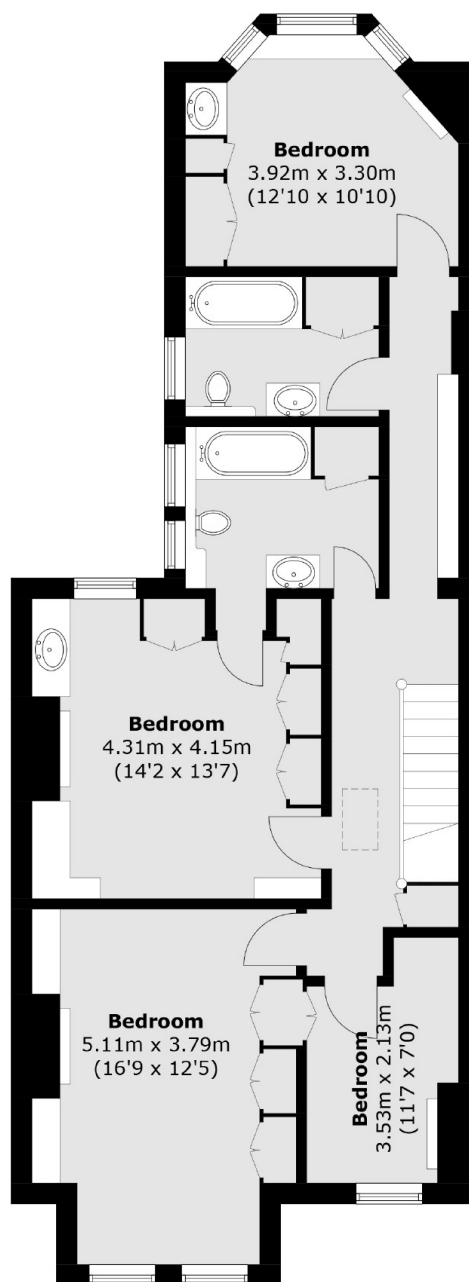




Westbere Road, London, NW2



Ground Floor



First Floor

Total area (approx.): 188.2 sq. m (2,025.7 sq. ft)