



Finchley Road, NW2

£750,000

A spacious four bedroom apartment on the third floor (with lift) of a well loved Tudor building. It includes a double reception room, a fully equipped separate kitchen, two bathroom, and an additional W.C.

Transport links and amenities are abundant with the likes of Hampstead, West Hampstead and Golders Green all being within close proximity. For beautiful scenic walks and general recreation, Hampstead Heath and Golders Hill Park are a short walk away.

Features

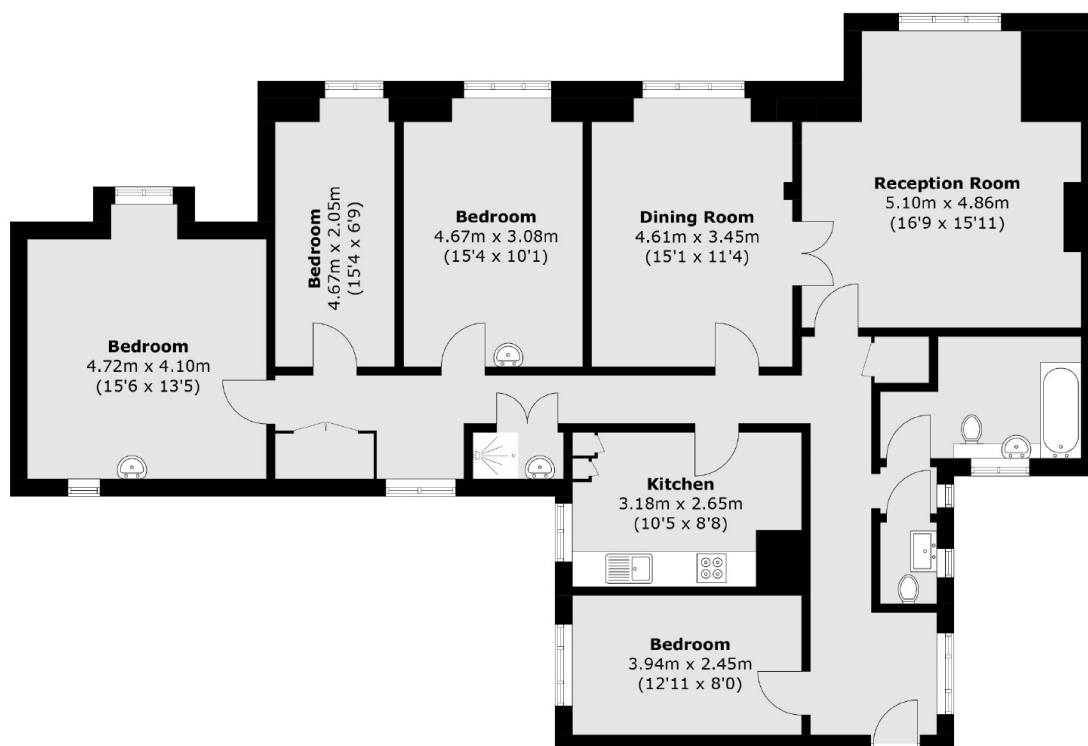
- Four Bedrooms
- Two Bathrooms
- Third Floor
- Lift Usage
- Over 1450 sq ft
- No Onward Chain



Finchley Road, NW2



Finchley Road, London, NW2



Total area (approx.): 136.1 sq. m (1,464.9 sq. ft)