



Willesden Lane, NW6

£400,000

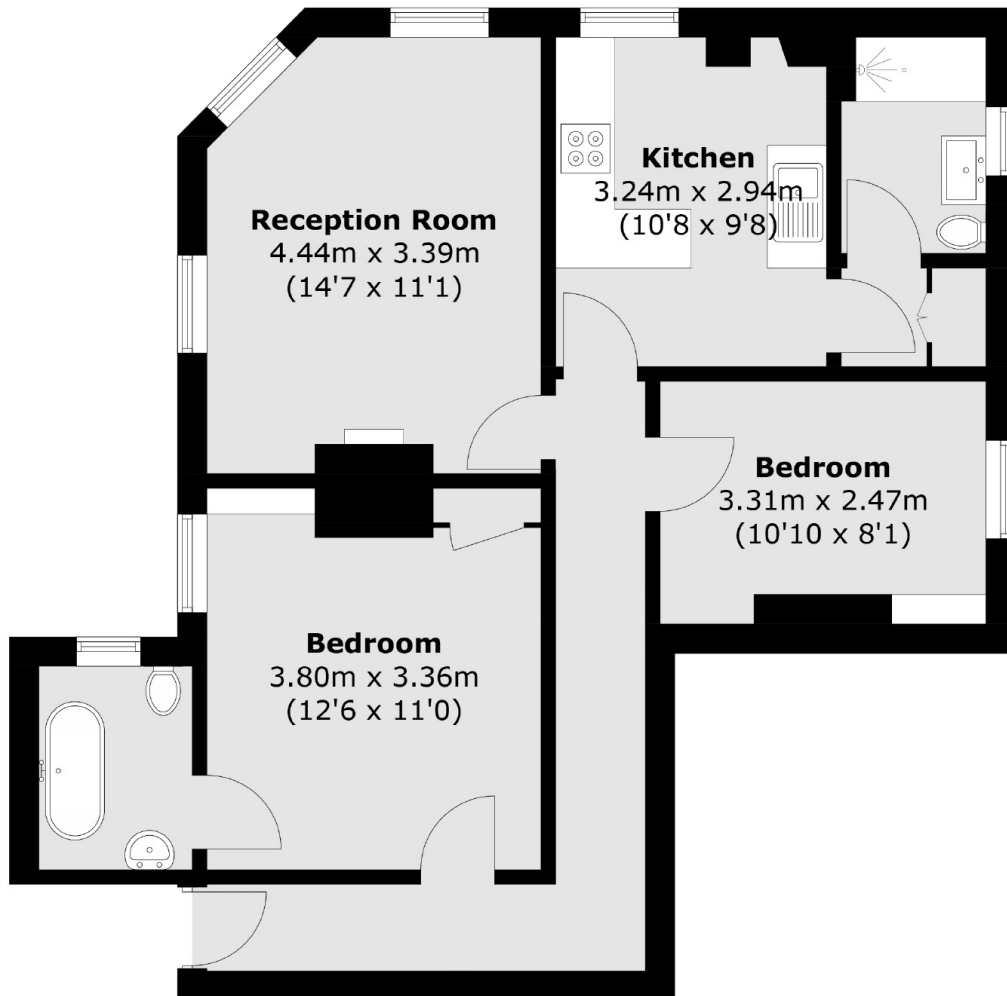
A spacious two bedroom apartment set on the second floor of this purpose built block. This property has a separate kitchen, two bathrooms and a long lease.

Cleveland Mansions Is situated on Willesden Lane close to the shops, bars and restaurants of Kilburn High Road and Willesden Lane. Transport links can be found at Kilburn Park (Bakerloo), Kilburn (Jubilee) and Kilburn High Road (overground).

Features

- Two Double Bedrooms
- Two Bathrooms
- Long Lease
- Excellent Transport Links
- Separate Kitchen
- Second Floor Flat

Willesden Lane, London, NW6



Total area (approx.): 65.9 sq. m (709.3 sq. ft)