



## Finchley Road, NW11

£480,000

A spacious two bedroom apartment located on the top floor (with a lift) of this modern development with a large balcony. The property has secure underground parking and will be sold with no onward chain

Close to Golders Green tube, Cricklewood, Thameslink and a number of bus routes on the doorstep. There is also the open spaces of Hampstead Heath and Golders Hill Park close by.

### Features

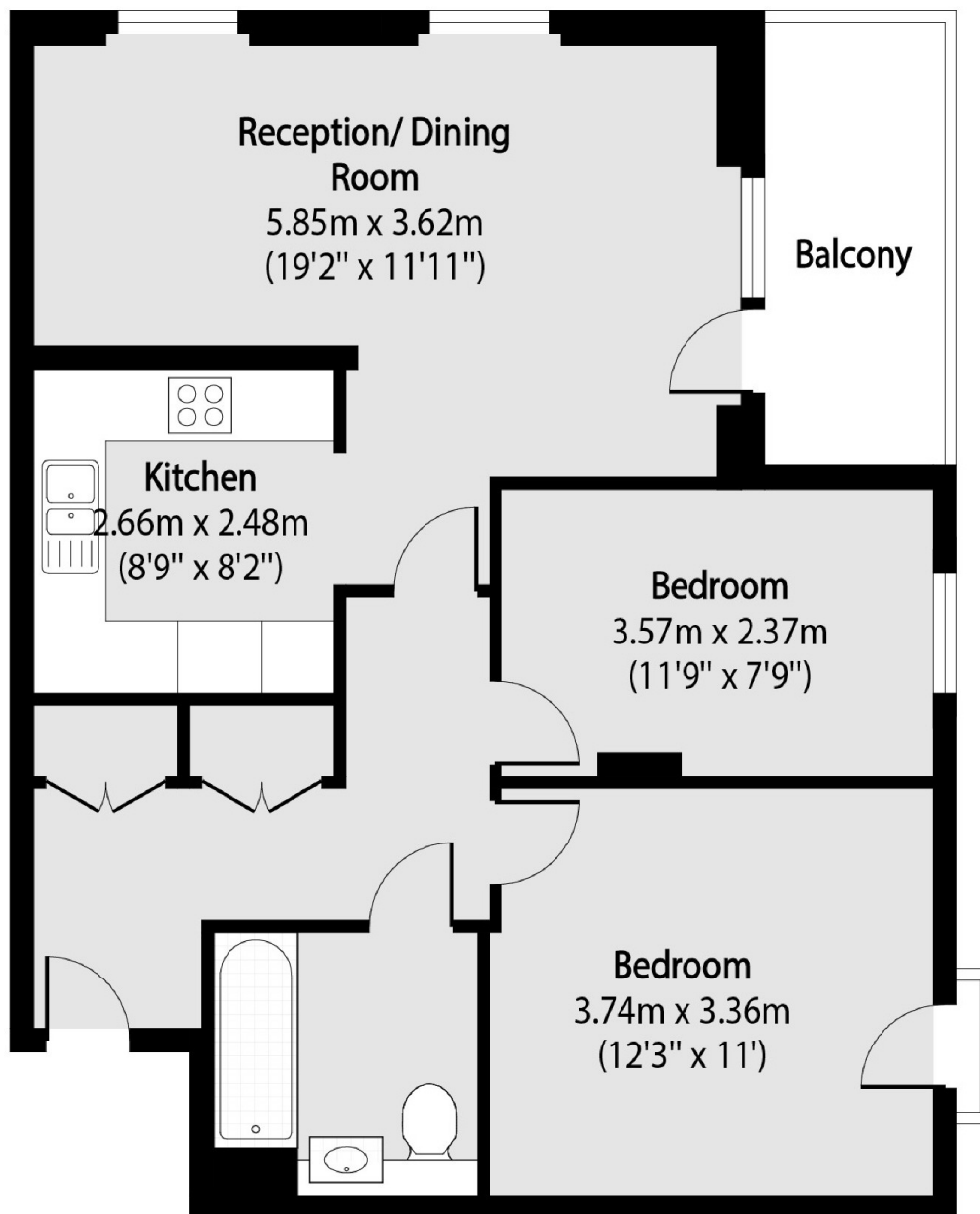
- Two Bedrooms
- Lift
- Top Floor
- Terrace
- No Onward Chain
- Underground Parking



**Finchley Road, NW11**



# Finchley Road, London, NW11



Total area (approx): 63.74 sq m (686 sq. ft)

Balcony total area (approx): 5.55 sq m (60 sq. ft)