



Cricklewood Lane, NW2

£399,950

A two double bedroom flat with a large private terrace located on the top two floors of this semi detached house. The property benefits from off street parking and it will be sold with no onward chain.

Transport links and amenities are abundant with Hampstead, West Hampstead and Golders Green all being within close proximity. For beautiful scenic walks and general recreation, Hampstead Heath and Golders Hill Park are a short walk away.

Features

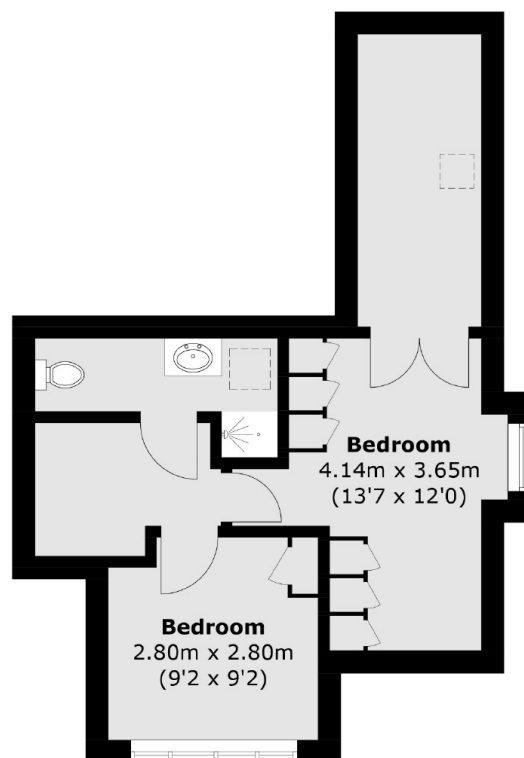
- Two Bedrooms
- Semi Detached
- Large Private Terrace
- Top Floor
- Off Street Parking
- No Onward Chain



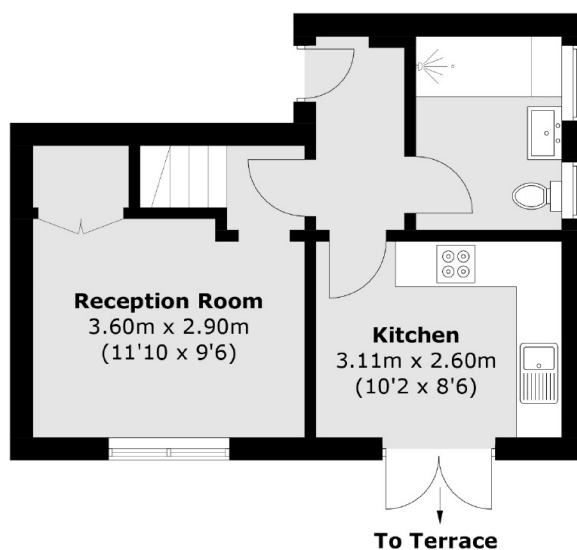
Cricklewood Lane, NW2



Cricklewood Lane, London, NW2



Second Floor



First Floor

Total area (approx.): 65.7 sq. m (707.2 sq. ft)