



Hendon Way, NW2

£419,950

This two bedroom ground floor flat has been recently refurbished by the current owner to a very high standard and has direct access to a large, quiet private garden. The property has a beautifully refurbished bathroom with a separate bath and shower.

Several bus options directly outside for easy access to Golders Green station, (Northern line) Finchley Road station, (Metropolitan and Jubilee) the West End and Waterloo - Ideal location for all amenities of West Hampstead, Childs Hill and green open spaces of Golders Hill park

Features

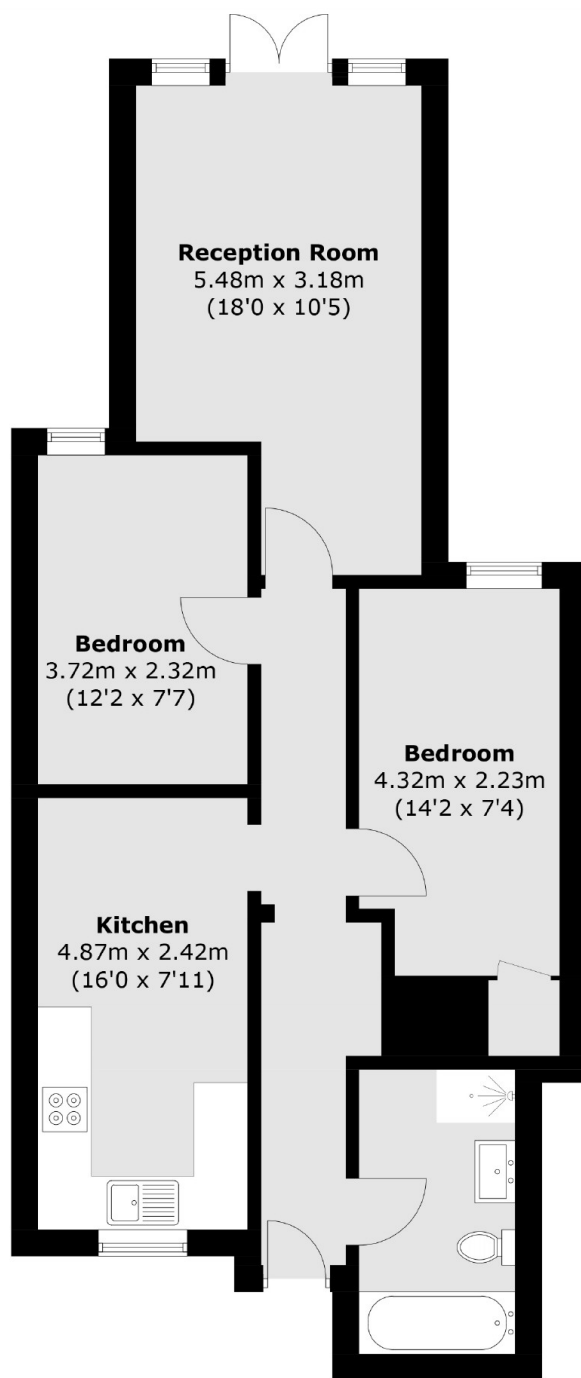
- Two Bedrooms
- Private Garden
- Fully Refurbished
- Off Street Parking
- Share Of Freehold
- No Onward Chain



Hendon Way, NW2



Hendon Way,
London, NW2



Ground Floor

Total area (approx.): 64.0 sq. m (688.8 sq. ft)