



## Finchley Road, NW2 £349,950

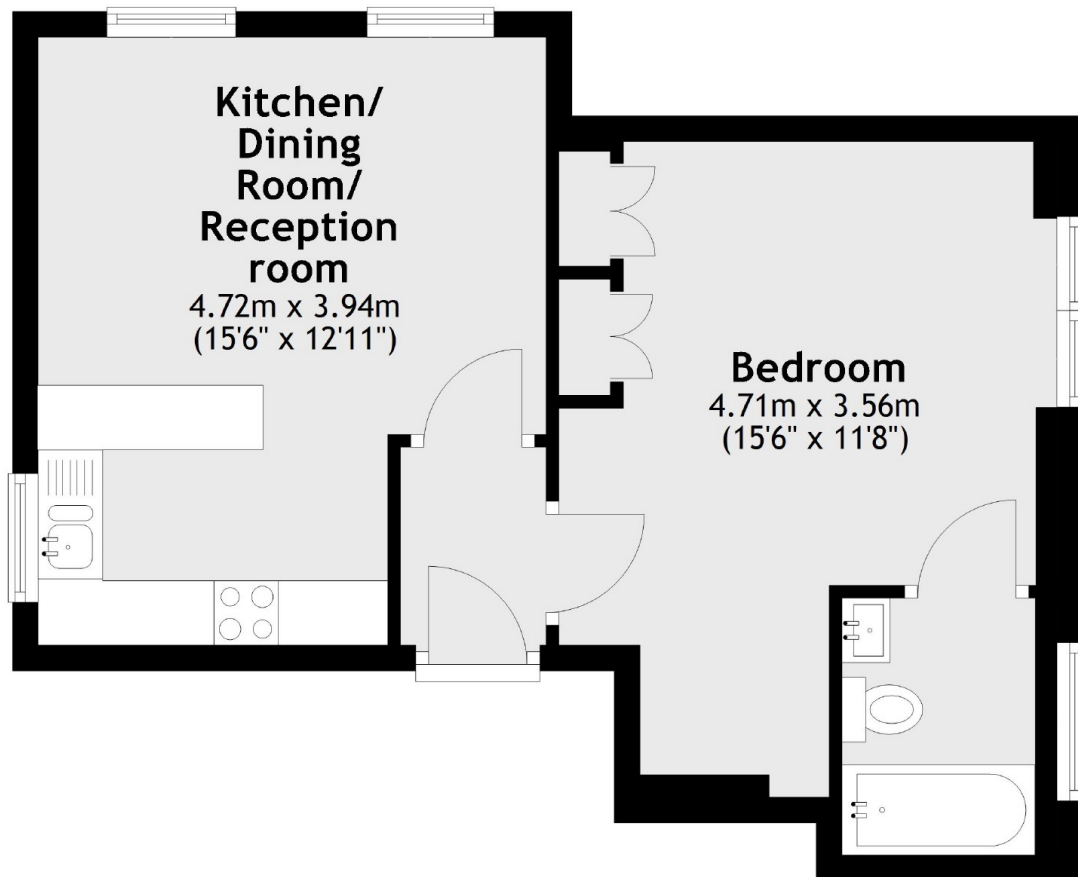
This one bedroom apartment has allocated parking and is located on the first floor of this detached Victorian building. The property has been recently refurbished to a high standard and will be sold with no onward chain.

Close to Golders Green tube, Cricklewood Thameslink and a number of bus routes on the doorstep. There is also the open spaces of Hampstead Heath and Golders Hill Park close by.

### Features

- Detached Victorian Building
- One Bedroom
- First Floor
- Recently Refurbished
- Allocated Parking
- No Onward Chain

Finchley Road,  
London, NW2



Total area: approx. 38.6 sq. metres (415.9 sq. feet)

**Dexters**

West Hampstead Sales  
349 West End Lane  
London  
NW6 1LT  
Sales  
020 7644 9300

Energy Rating: D. We aim to make our particulars both accurate and reliable. However they are not guaranteed; nor do they form part of an offer or contract. If you require clarification on any points then please contact us, especially if you're traveling some distance to view. Please note that appliances and heating systems have not been tested and therefore no warranties can be given as to their good working order.

 **RICS** | Regulated  
Estate Agent  
and Letting Agent

[dexters.co.uk](http://dexters.co.uk)