



## Kings Gardens, NW6

£700,000

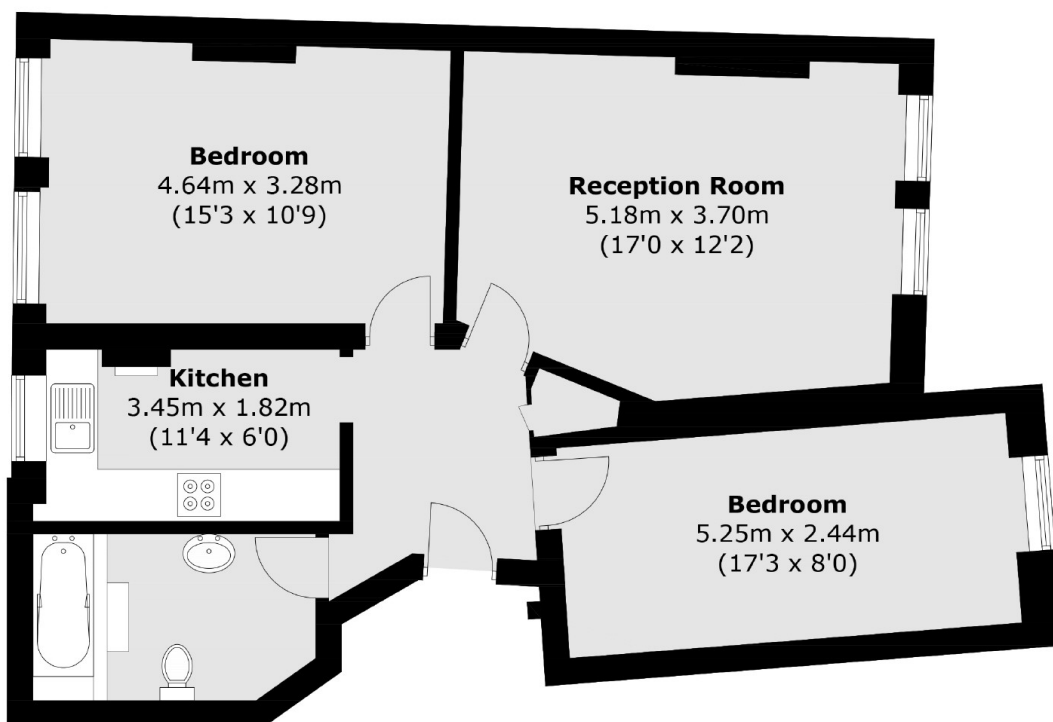
A spacious two bedroom apartment located on the ground floor of this popular mansion block. The property has a share of freehold, on site porter and will be sold with no onward chain.

Kings Gardens is positioned within walking distance of the amenities and transport links on West End Lane and Kilburn High Road. Shops, restaurants and cafés are in abundance.

### Features

- Two Double Bedrooms
- Ground Floor
- High Ceilings
- Communal Gardens
- Separate Kitchen
- No Onward Chain

# Kings Gardens, London, NW6



Total area (approx.): 71.1 sq. m (765.3 sq. ft)