



## Fairhazel Gardens, NW6

£610,000

A spacious one bedroom apartment set on the raised ground floor of this Victorian house. This property has a private garden, open plan kitchen/ living space and has plenty of storage throughout.

Fairhazel Gardens is conveniently situated for all the amenities of South Hampstead, including Finchley Road underground station (Jubilee & Metropolitan Lines) and within easy access to the many local schools and shops of both Hampstead and St John's Wood.

### Features

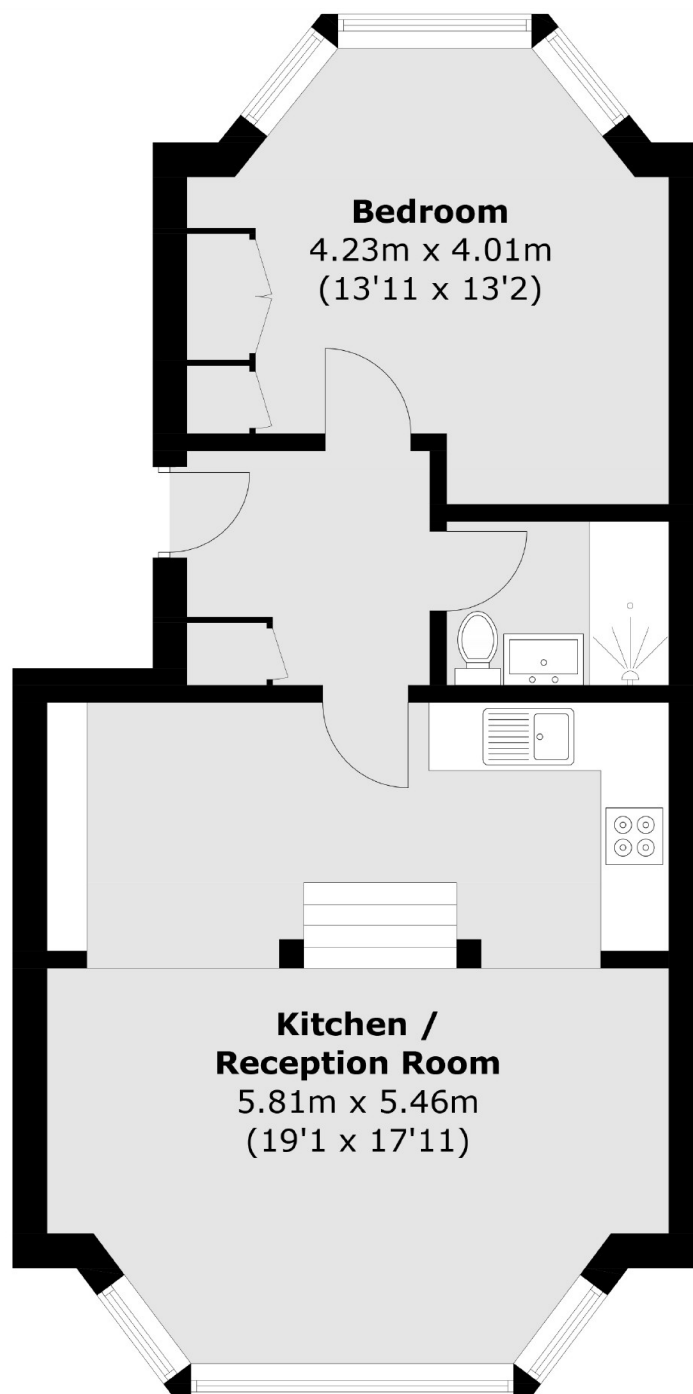
- One Bedroom
- Private Garden
- Raised Ground Floor
- Victorian Features
- Access to Communal Gardens
- Open Plan Kitchen/ Reception



**Fairhazel Gardens, NW6**



# Fairhazel Gardens, London, NW6



Total area (approx.): 52.3 sq. m (562.9 sq. ft)