



Priory Terrace, NW6

£750,000

This two bedroom garden flat is set within a charming Victorian building and has been recently refurbished throughout to a very high standard. The property has its own front door and further benefits include two bathrooms, share of freehold and no onward chain.

Priory Terrace is ideally positioned to benefit from the shops, restaurants and cafes of West Hampstead and St John's Wood whilst a combination of the Jubilee Line, Overground, Thameslink and Bakerloo Line transport links can be found nearby.

Features

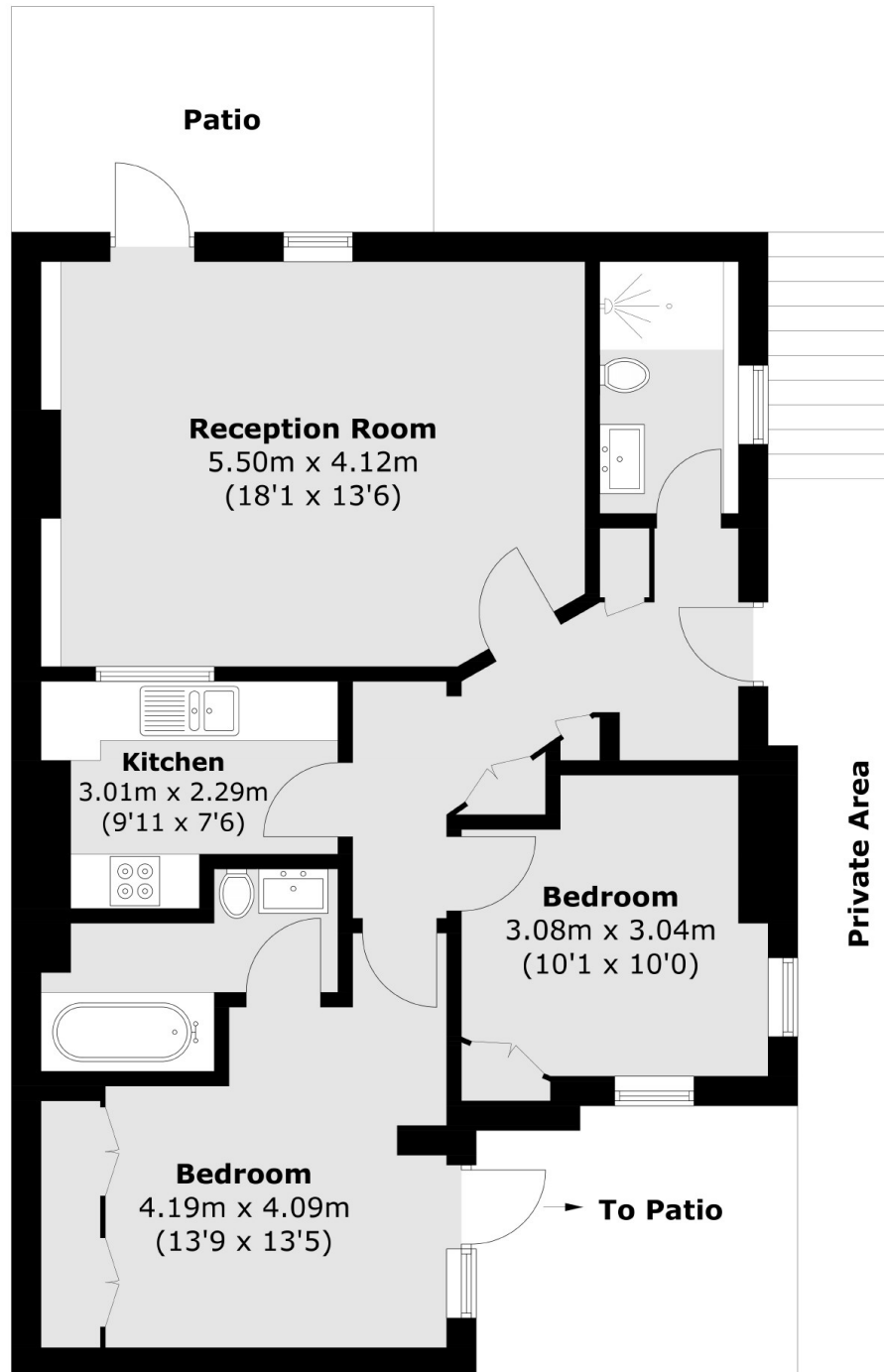
- Two Double Bedrooms
- Ample Built In Storage
- Two Private Patio Gardens
- Share of Freehold
- Two Bathrooms
- Totally Modernised



Priory Terrace, NW6



Priory Terrace,
London, NW6



Total area (approx.): 70.5 sq. m (758.9 sq. ft)