



West End Lane, NW6

£1,100,000

Refurbished to an excellent standard, a stunning, unique loft flat with three double bedrooms, two en suite bathrooms, an enormous living space and access to communal gardens. An ideal family property.

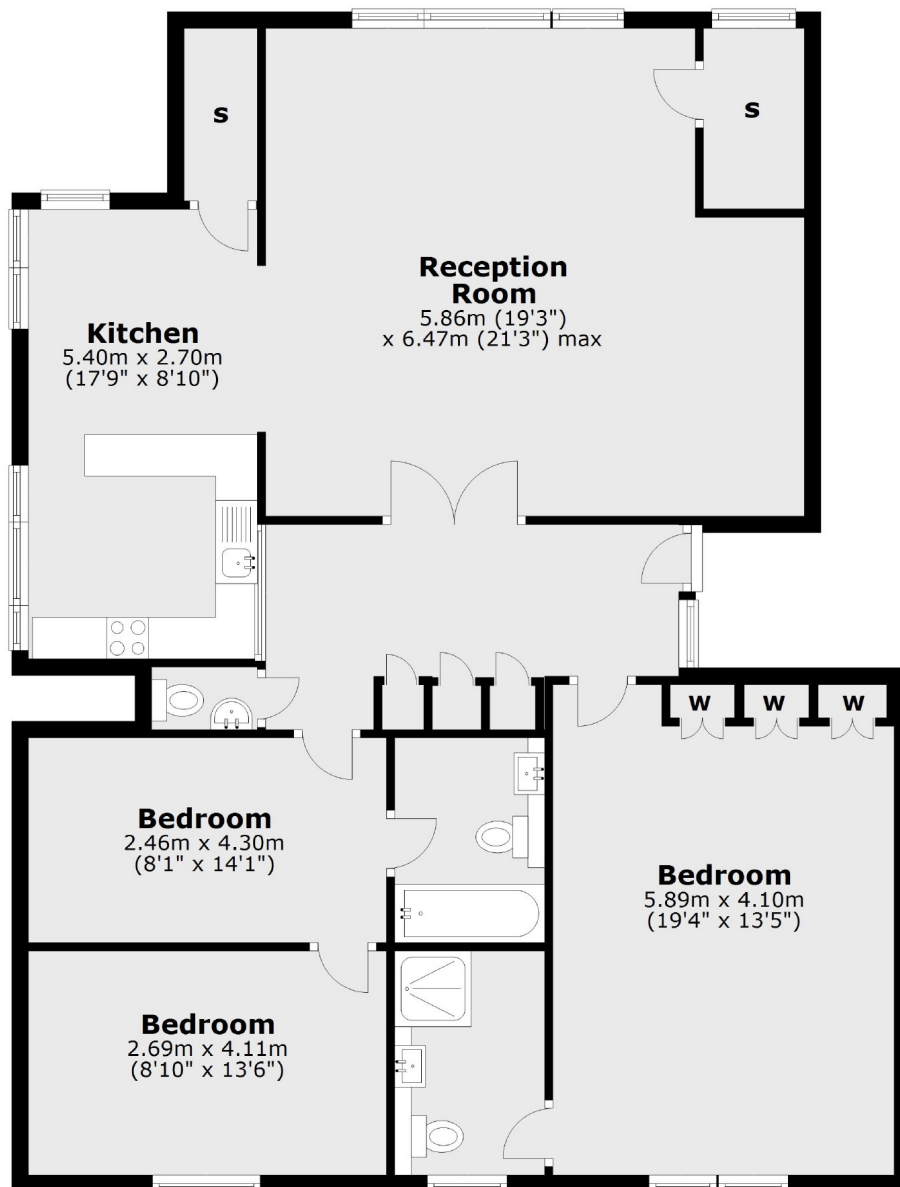
Positioned just south of the stations on West End Lane (Jubilee, Overground and Thameslink), the property is within easy walking distance of the multiple shops, restaurants and bars.

Features

Three Bedrooms
Two En Suite Bathrooms
Stunning Reception
Top Floor
1350 Sq Ft
Communal Garden

West End Lane, London, NW6

Third Floor



Total area: approx. 125.6 sq. metres (1351.9 sq. feet)

Contact

To arrange a viewing call our office on the number below or visit our website.



Energy Rating: E. We aim to make our particulars both accurate and reliable. However they are not guaranteed; nor do they form part of an offer or contract. If you require clarification on any points then please contact us, especially if you're traveling some distance to view. Please note that appliances and heating systems have not been tested and therefore no warranties can be given as to their good working order.