



Dyne Road, NW6

£475,000

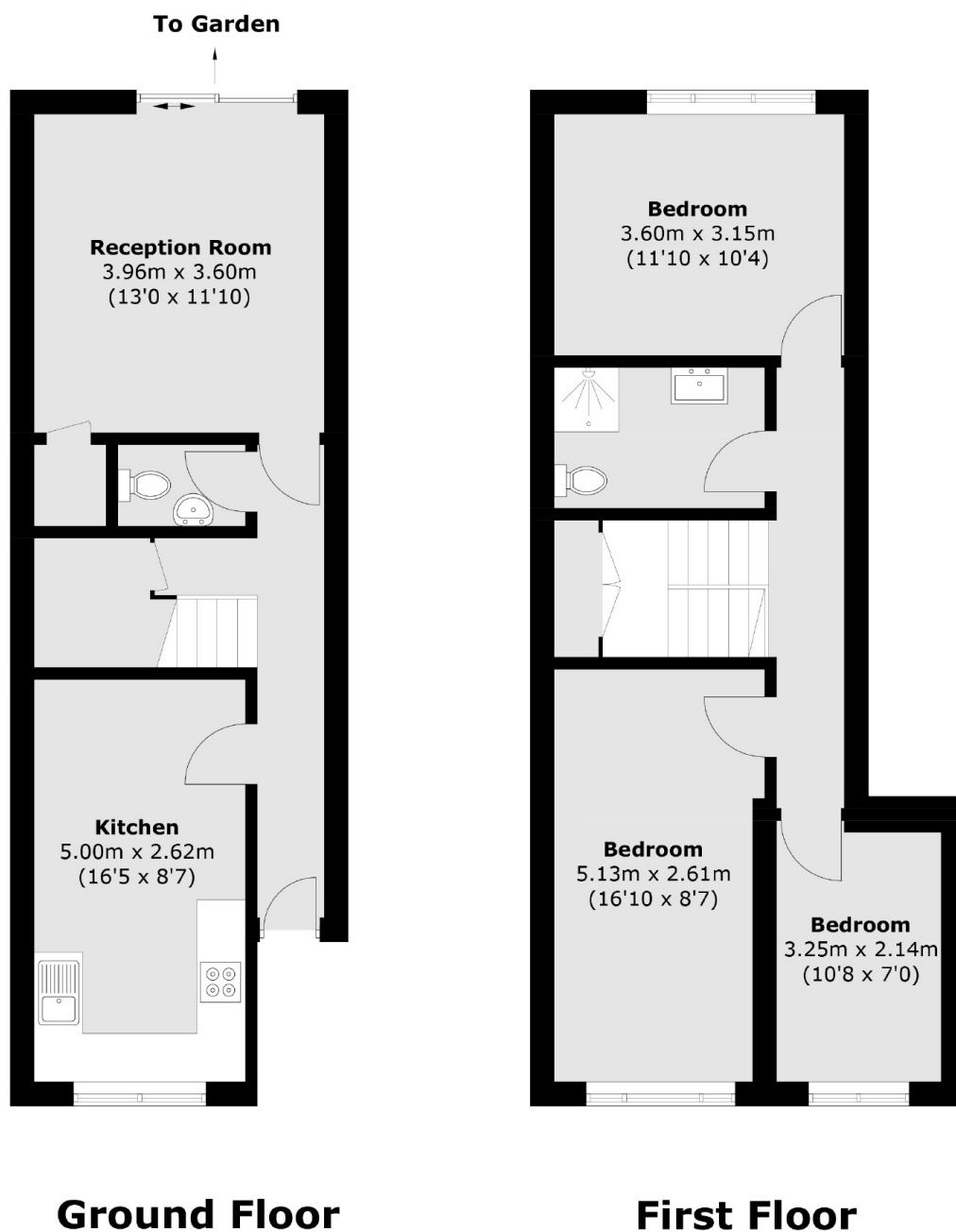
This three bedroom flat is located on the ground and first floor of this purpose built block and has direct access to a private garden. The property offers over 950 sq, ft and will be sold with no onward chain.

Dyne Road is near to the numerous shops, cafés and restaurants of Queens Park's Salusbury Road. Excellent transport links include both Brondesbury Park and Brondesbury Overground stations and Kilburn underground

Features

- Three Bedrooms
- Split Level
- Private Garden
- Residents Parking
- Close To Station
- No Onward Chain

Dyne Road, London, NW6



Total area (approx.): 88.9 sq. m (957.0 sq. ft)