



Kings Gardens, NW6

£950,000

A well proportioned three bedroom apartment set within this attractive mansion block. This property has two bathrooms, a semi open plan kitchen/ reception room and a private balcony.

Kings Gardens is ideally located between South Hampstead and West Hampstead giving excellent transport links across London. West End Lane has many restaurants, cafes, and bars all within easy reach.

Features

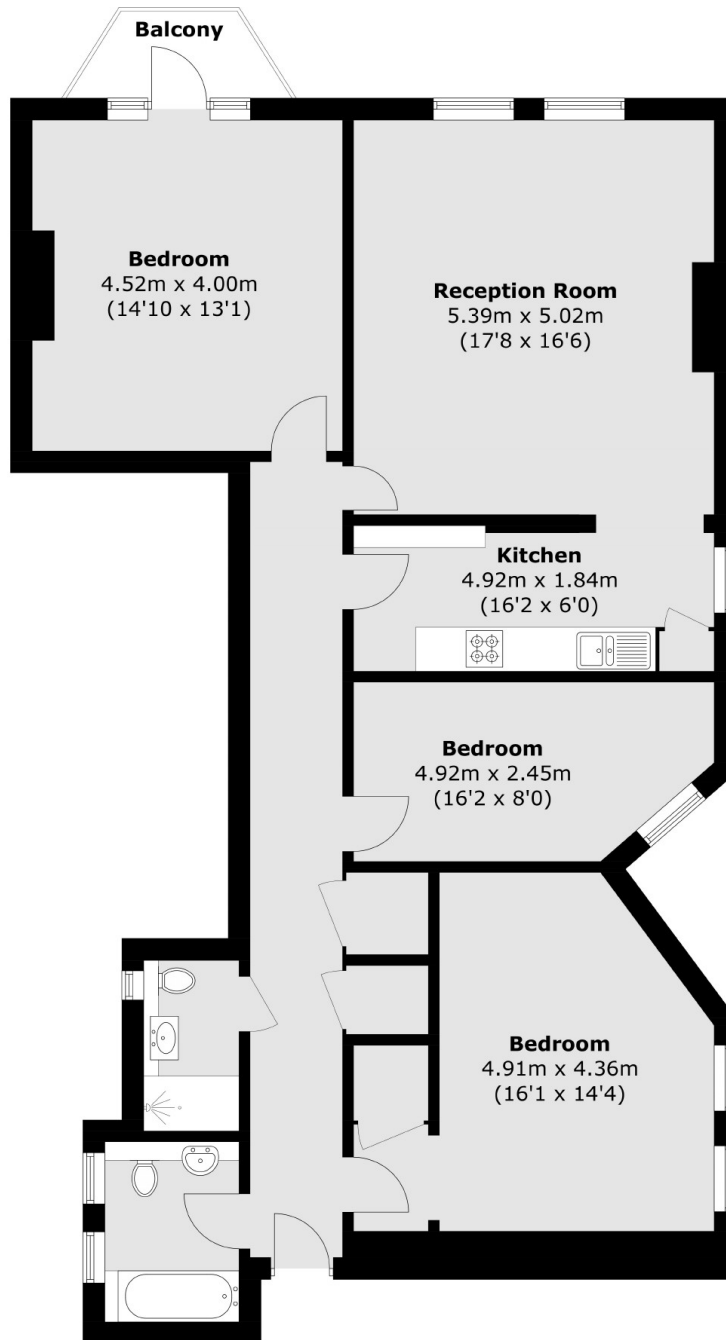
- Three Double Bedrooms
- Two Bathrooms
- Private Balcony
- Mansion Block
- Excellent Transport Links
- Porter



Kings Gardens, NW6



Kings Gardens, London, NW6



Total area (approx.): 115.6 sq. m (1,244.3 sq. ft)
Balcony: 2.8 sq. m (30.1 sq. ft)