



Sumatra Road, NW6

£950,000

This extremely well presented garden flat has two double bedrooms and is located in this pretty Victorian converted building. The property has been stylishly renovated through out and features very high specification.

Sumatra Road is conveniently located off of vibrant West End Lane which offers easy access to the variety of shops, bars and restaurants including all the versatile transport links (Thameslink, London overground and West Hampstead tube station - Jubilee Line).

Features

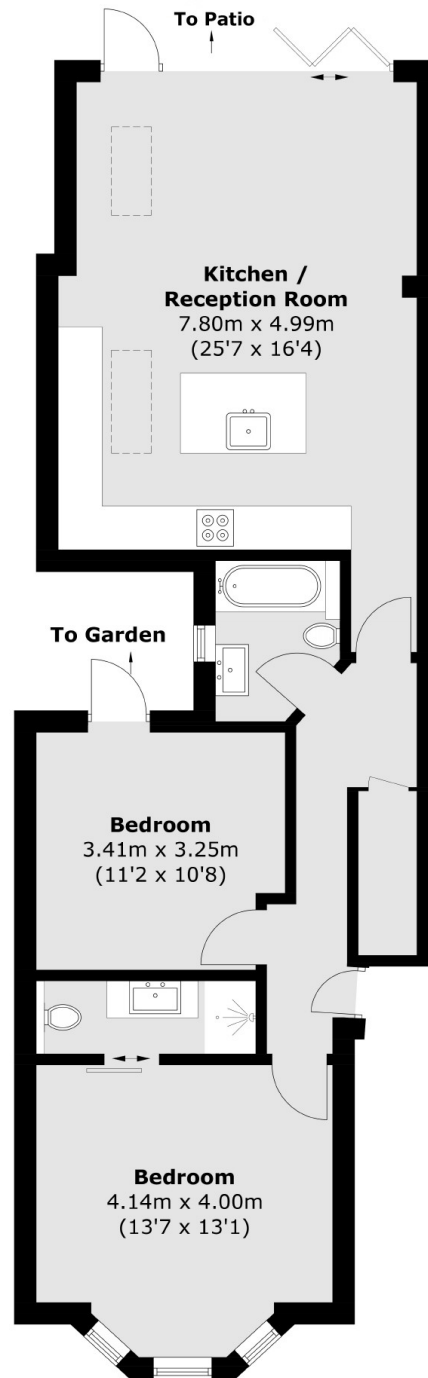
- Victorian Conversion
- Two Double Bedrooms
- Two Bathrooms
- Freehold
- Open Plan
- Fully Refurbished
- Courtyard



Sumatra Road, NW6



Sumatra Road, London, NW6



Total area (approx.): 75.1 sq. m (808.4 sq. ft)