



## Birchington Road, NW6

£699,995

This three bedroom two bathroom apartment boasts a substantial secluded garden, open plan living and is set within a Victorian house. This property has a share of the freehold and lots of Victorian Features.

Located on this quiet residential street close to the amenities of both West Hampstead and Kilburn High Road. Minutes walking distance to overground and underground Kilburn stations.

### Features

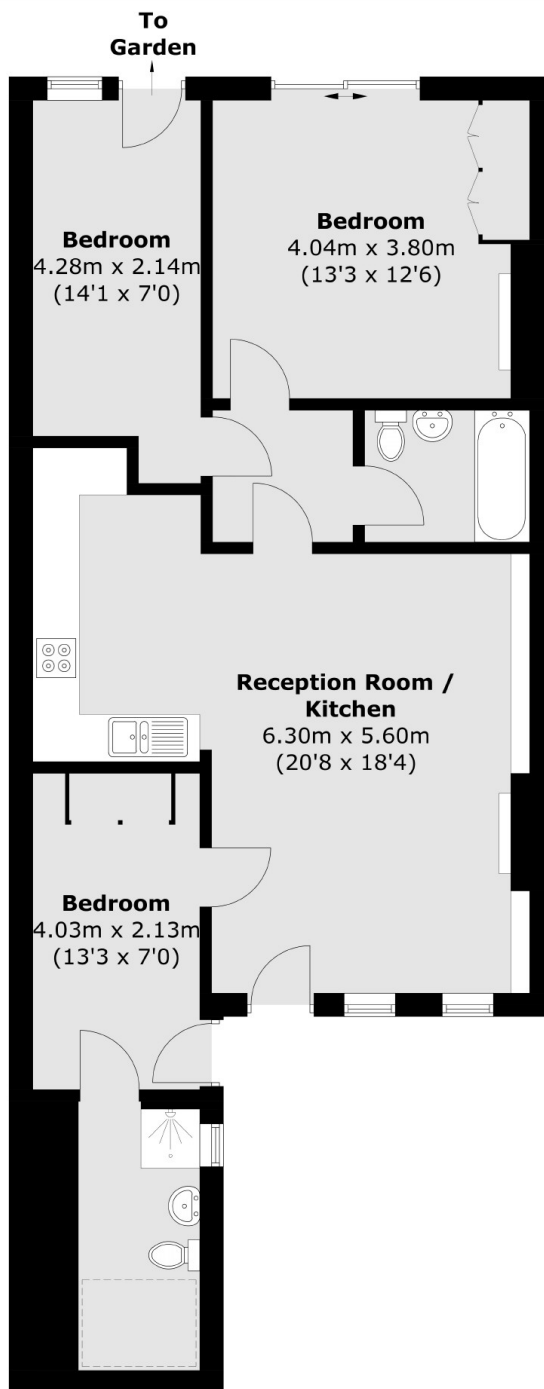
- Three Double Bedrooms
- Private Garden
- Share Of Freehold
- Two bathrooms
- Victorian Features
- Excellent Transport Links



**Birchington Road, NW6**



# Birchington Road, London, NW6



Total area (approx.): 82.9 sq. m (892.3 sq. ft)