



Finchley Road, NW3

£1,195,000

Dexters



Finchley Road, NW3

This four bedroom house would make the perfect family home with over 2000 sq.ft of accommodation and further scope to extend! The property has a large south west facing garden and will be sold with no onward chain.

This house will not disappoint as there is a room for everyone! There's double reception room to the front of the house with a charming bay window, high ceilings and guest WC. You will find a separate kitchen to the rear of the property leading to a dining room with doors to the rear of the property leading out on to the garden.

There is a very generous main bedroom on the first floor with fitted wardrobes followed by three additional double bedrooms and two family bathrooms.

To top it off the garden to the rear is big enough for the kids to play whilst entertaining guests or can be a great investment opportunity.

Perfectly located for easy access to both Finchley Road and West Hampstead underground stations as well as West Hampstead Overground and Thameslink stations. There are bus connections to central London, Golders Green and Brent Cross. Hampstead Heath is also nearby.

Features

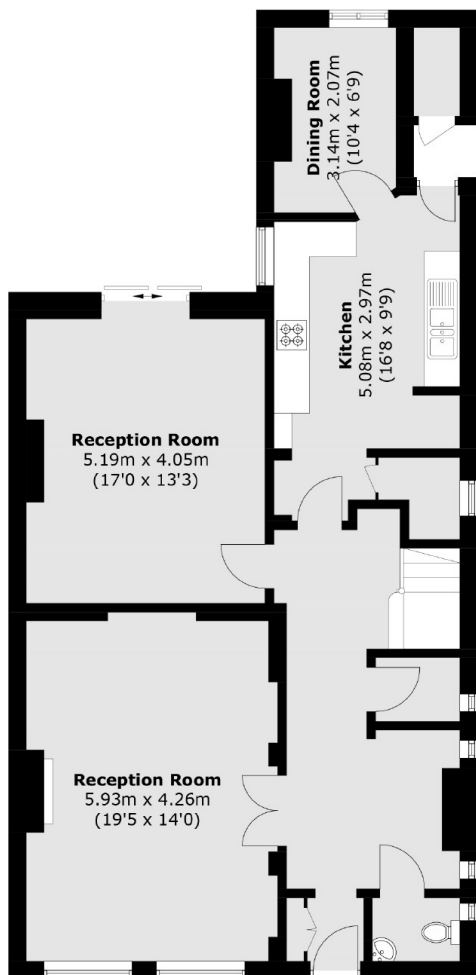
- Four Double Bedrooms
- Semi Detached
- Off Street Parking
- Two Bathrooms
- Two Reception Rooms
- No Onward Chain







Finchley Road, London, NW3



Ground Floor



First Floor

Total area (approx.): 188.8 sq. m (2,032.2 sq. ft)

Dexters

West Hampstead Sales
349 West End Lane
London
NW6 1LT
Sales
020 7644 9300

Energy Rating: E. We aim to make our particulars both accurate and reliable. However they are not guaranteed; nor do they form part of an offer or contract. If you require clarification on any points then please contact us, especially if you're traveling some distance to view. Please note that appliances and heating systems have not been tested and therefore no warranties can be given as to their good working order.

 **RICS** | Regulated
Estate Agent
and Letting Agent

[dexters.co.uk](https://www.dexters.co.uk)