



Greencroft Gardens, NW6

£875,000

This spacious two double bedroom flat has a private balcony and is located on the top floor of this converted Victorian building. The property is ideal for entertaining with the large open plan lounge and it will be sold with no onward chain.

Greencroft Gardens is situated within the South Hampstead conservation Area. Finchley Road underground station and West Hampstead train stations, as well as the local amenities of West End Lane are within easy reach.

Features

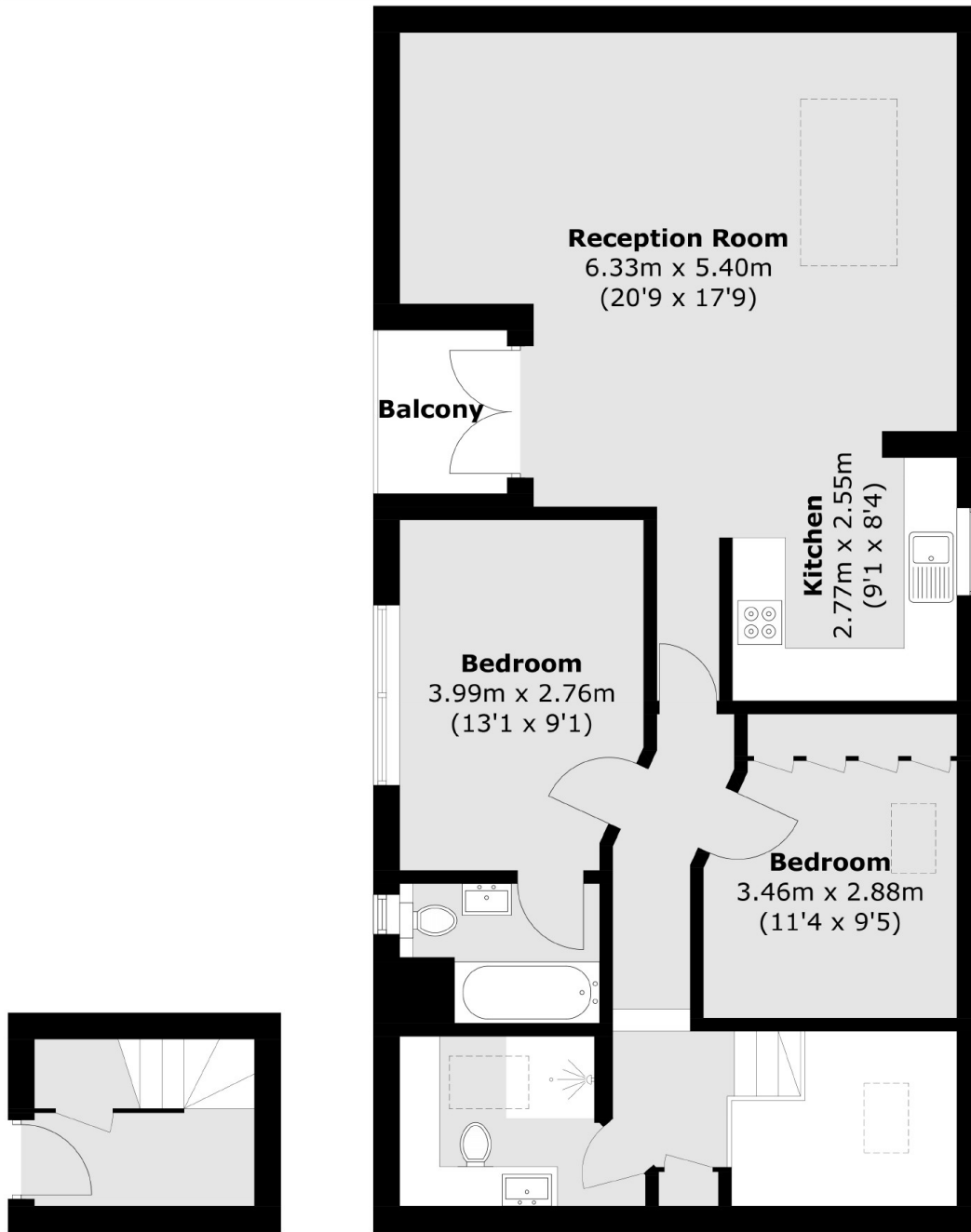
- Two Double Bedrooms
- Balcony
- Open Plan
- Top Floor
- Victorian Conversion
- No Onward Chain



Greencroft Gardens, NW6



Greencroft Gardens, London, NW6



Ground Floor

First Floor

Total area (approx.): 81.1 sq. m (872.9 sq. ft)
(Excluding Void)

Balcony area (approx.): 2.7 sq. m (29.1 sq. ft)

Dexters

West Hampstead Sales
349 West End Lane
London
NW6 1LT
Sales
020 7644 9300

Energy Rating: D. We aim to make our particulars both accurate and reliable. However they are not guaranteed; nor do they form part of an offer or contract. If you require clarification on any points then please contact us, especially if you're traveling some distance to view. Please note that appliances and heating systems have not been tested and therefore no warranties can be given as to their good working order.

 **RICS** Regulated
Estate Agent
and Letting Agent

dexters.co.uk