



## Belsize Road, NW6

£475,000

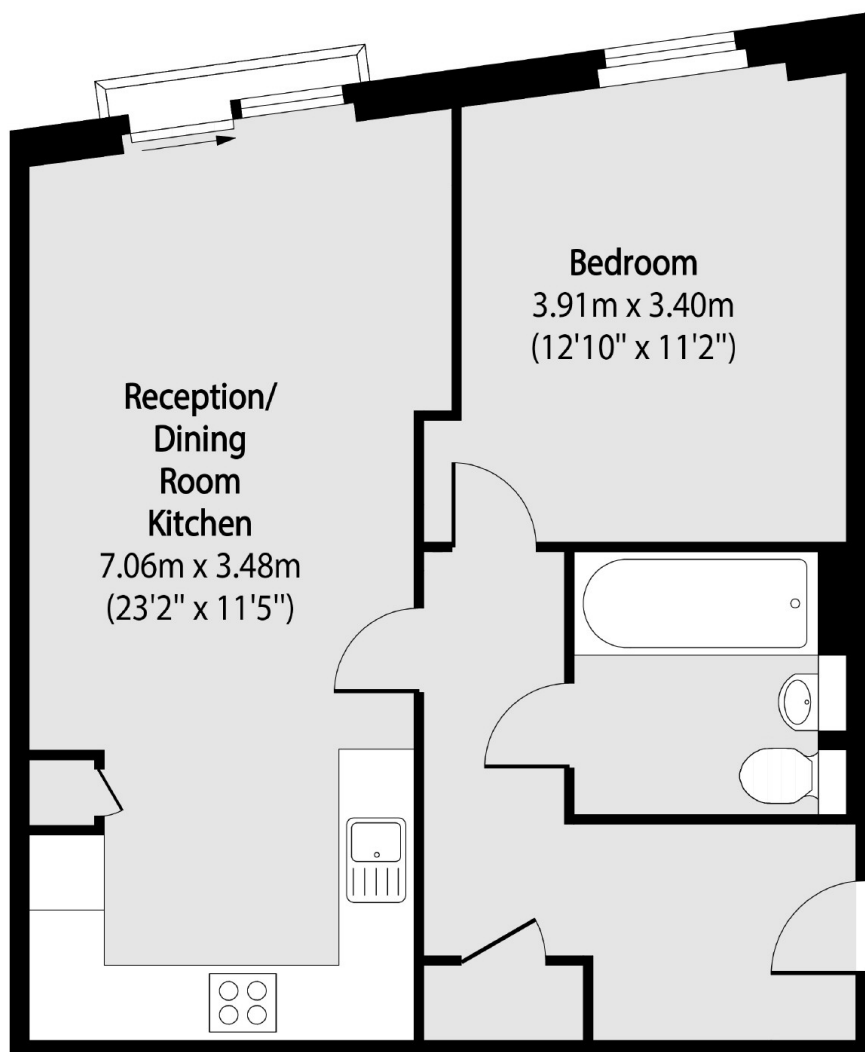
This one bedroom apartment has been recently refurbished to a high spec with designer kitchen, wallpaper and tiles. This would make an ideal first time purchase or investment, the property is located on the first floor and has a lift.

The apartment is located on Belsize Road which is ideal for easy access to Swiss Cottage underground station. There are multiple shops and other transport amenities nearby including Finchley Road tube Station.

### Features

- One Double Bedroom
- First Floor
- Lift
- Integrated Appliances
- Open Plan
- Recently Refurbished

# Belsize Road, London, NW6



Total area (approx): 50.44 sq m (543 sq. ft)