



## West End Lane, NW6

£845,000

A spacious two bedroom flat with two bathrooms and a private garden located within this pretty Victorian building. The property has been recently refurbished by the current owners and has its own entrance.

Conveniently located between West Hampstead and Kilburn, a moments walk from the first class shopping facilities of Kilburn High Road and both Kilburn underground station and Kilburn Park mainline station.

### Features

- Two Bedrooms
- Two Bathrooms
- Private Garden
- Newly Refurbished
- Open Plan
- Own Entrance



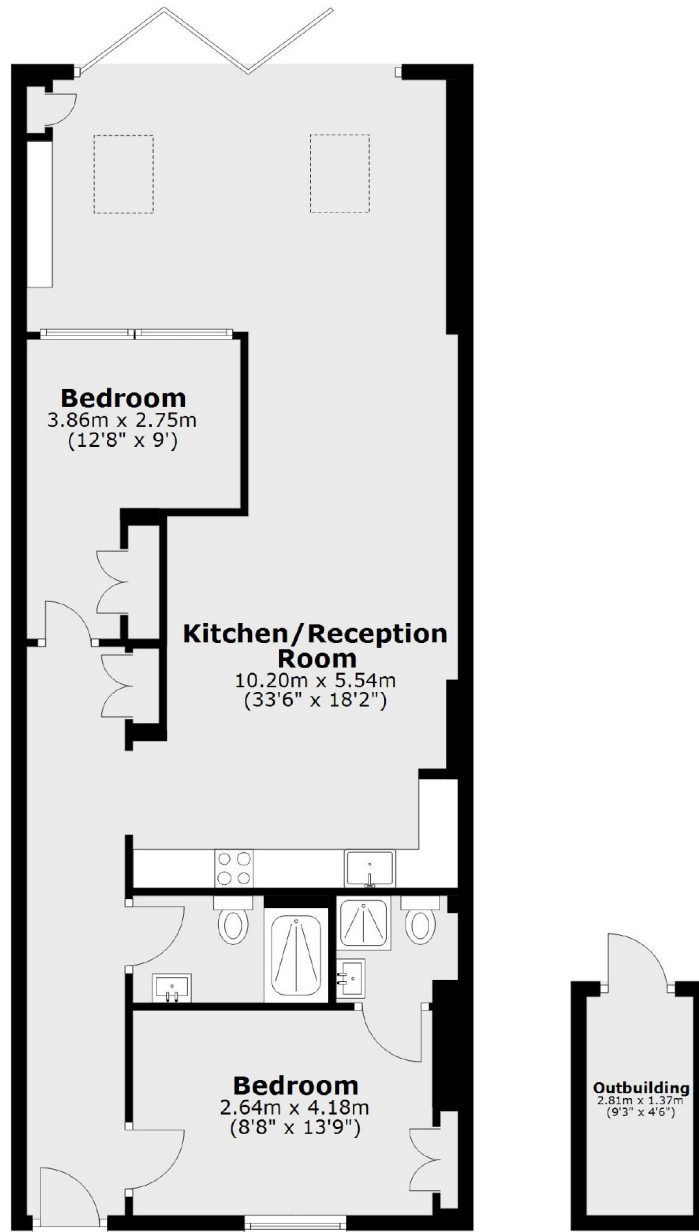


**West End Lane, NW6**





# West End Lane, London, NW6



Main area: Approx. 80.9 sq. metres (871.2 sq. feet)  
Plus outbuildings, approx. 3.9 sq. metres (41.5 sq. feet)