



## Goldhurst Terrace, NW6

£399,950

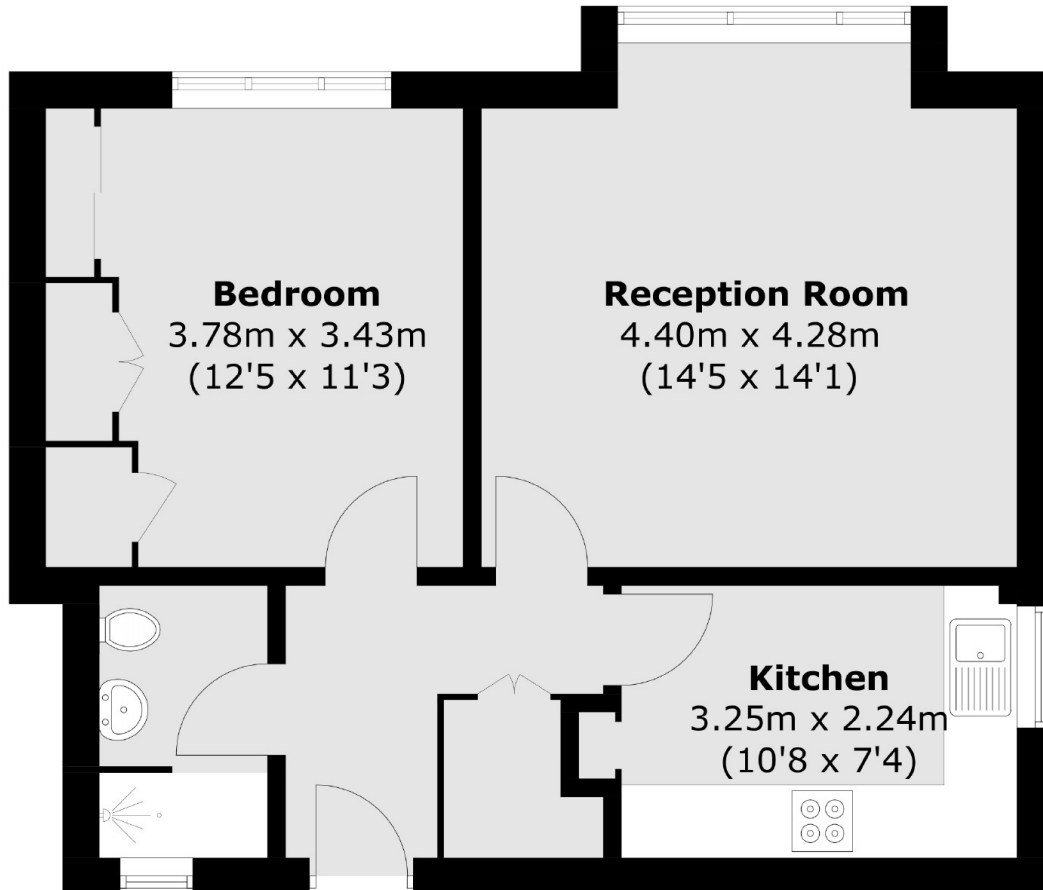
A spacious one bedroom apartment with a communal garden located on the first floor in this purpose built building. The property has the added bonus of a share of freehold, ample storage and will be sold with no onward chain.

Goldhurst Terrace is a popular residential street which is superbly located between trendy West End Lane and Finchley Road, with its array of shops, bars and restaurants.

### Features

- One Bedroom
- Communal Garden
- Separate Kitchen
- First Floor
- Share Of Freehold
- No Onward Chain

Goldhurst Terrace,  
London, NW6



Total area (approx.): 49.6 sq. m (533.9 sq. ft)