



Finchley Road, NW2

£750,000

A generously proportioned newly refurbished three double bedroom apartment set within a popular and imposing mansion block.

Transport links and amenities are abundant, with the likes of Hampstead, West Hampstead and Golders Green all being within close proximity. For beautiful scenic walks and general recreation, Hampstead Heath and Golders Hill Park are a short walk away.

Features

Newly Refurbished
Three Double Bedrooms
Three Bathrooms
Separate Dining Room
Integrated Appliances
No Upper Chain



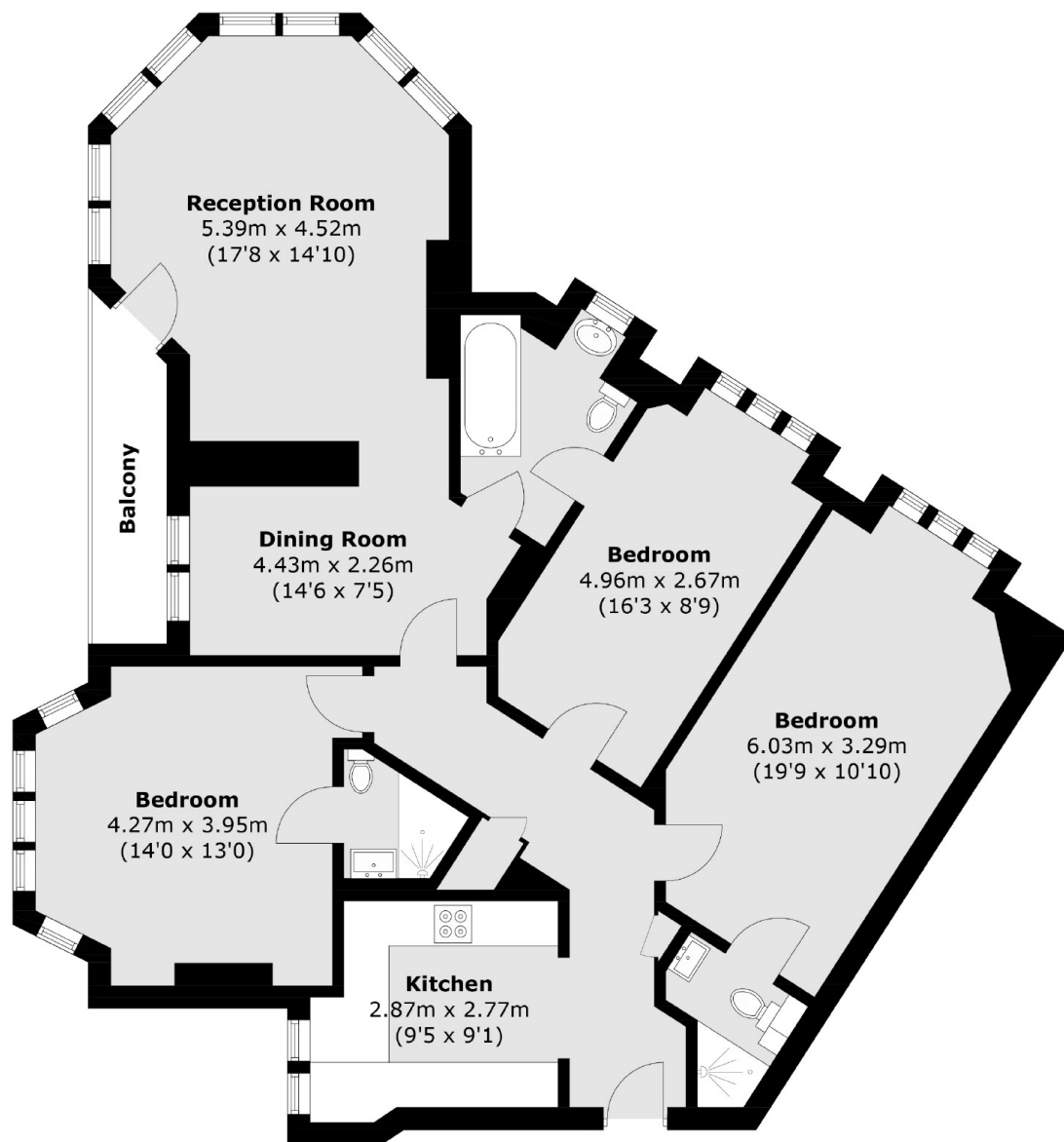
Finchley Road, NW2

This fabulous apartment spans over 1200 sq ft and features an 18ft reception room, perfect for entertaining, three double bedrooms and three luxurious bathrooms.

Additionally the apartment has wood flooring, integrated kitchen appliances, balcony and wonderful communal gardens.



Finchley Road, London, NW2



Third Floor

Total area (approx.): 113.6 sq. m (1,224.9 sq. ft)
Balcony area (approx.): 4.2 sq. m (45.2 sq. ft)