



Dunster Gardens, NW6

£450,000

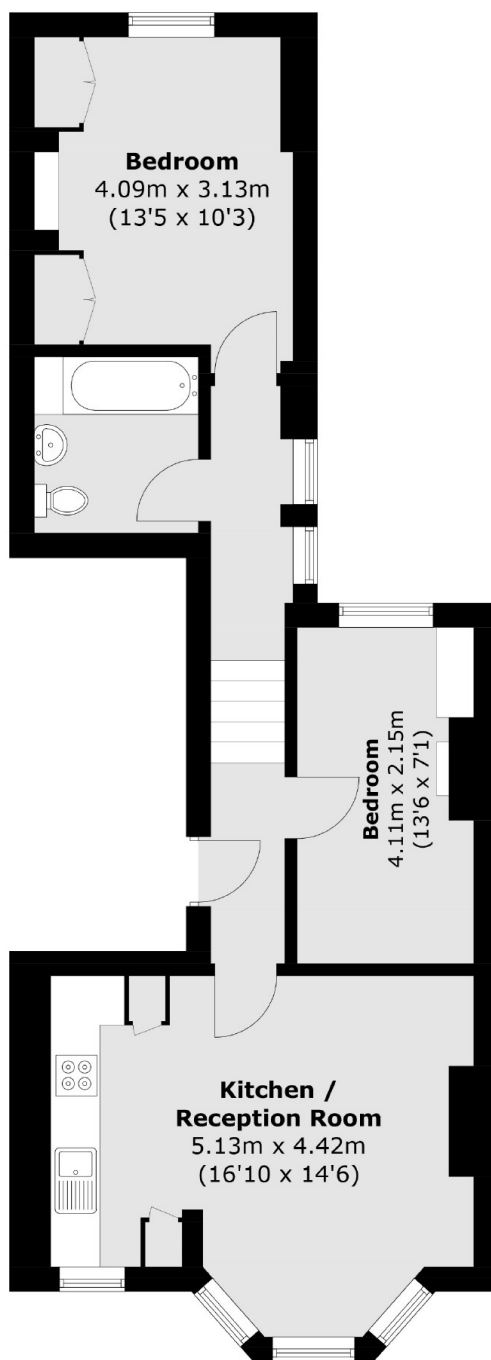
This two bedroom apartment is located on the first floor of this well-kept Victorian house. The property benefits from a modern open plan Kitchen/Reception room and high ceilings.

Dunster Gardens is ideally located for the amenities of Kilburn High Road with Brondesbury Overground and Kilburn tube station (Jubilee line) nearby.

Features

- Victorian Building
- First Floor Apartment
- Two Bedrooms
- Open Plan
- High Ceilings
- Close To Station

Dunster Gardens, London, NW6



Total area (approx.): 53.9 sq. m (580.2 sq. ft)