



West End Lane, NW6

£799,000

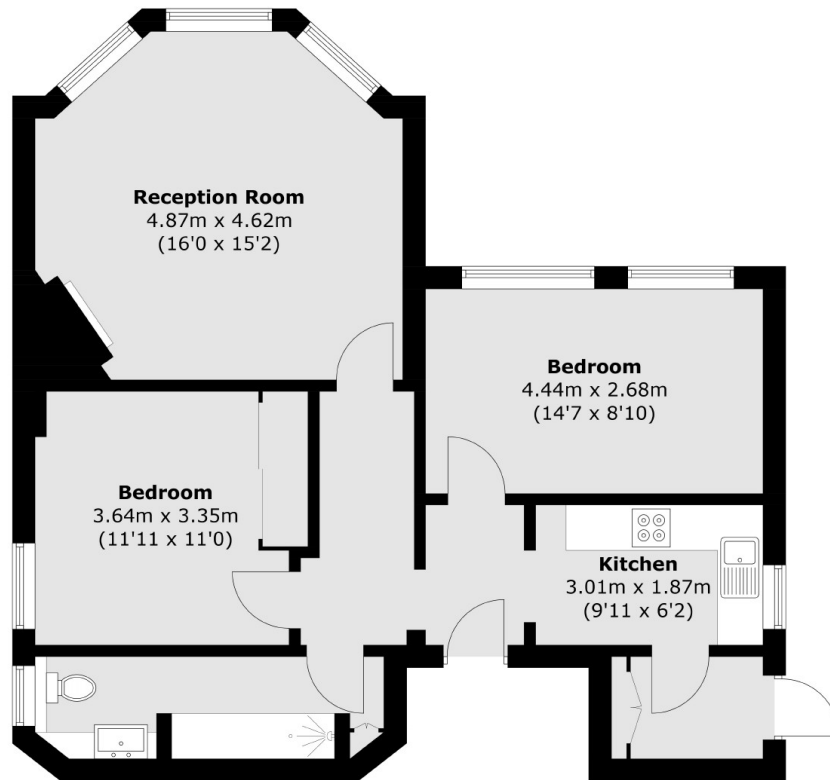
A characterful two bedroom apartment set within this stunning Victorian house. Featuring high ceilings, a fantastic bay window looking into tree-lined Compayne Gardens and plenty of storage.

The Compayne Gardens entranced building is located just yards away from the bustling high street and ample transport links of West Hampstead, including numerous bus routes and the Jubilee line, Overground and Thameslink.

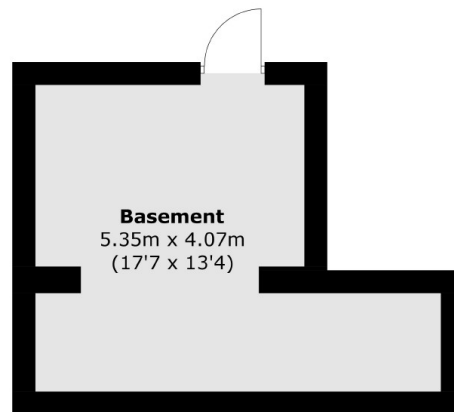
Features

- Two Double Bedrooms
- Communal Gardens
- Separate Kitchen
- Lots of Storage
- Victorian Features
- Fantastic Transport Links

West End Lane, London, NW6



First Floor



Basement / External Storage

Total area (approx.): 69.5 sq. m (748.1 sq. ft)
Basement / External Storage: 16.8 sq. m (180.8 sq. ft)