



West End Lane, NW6 £500,000

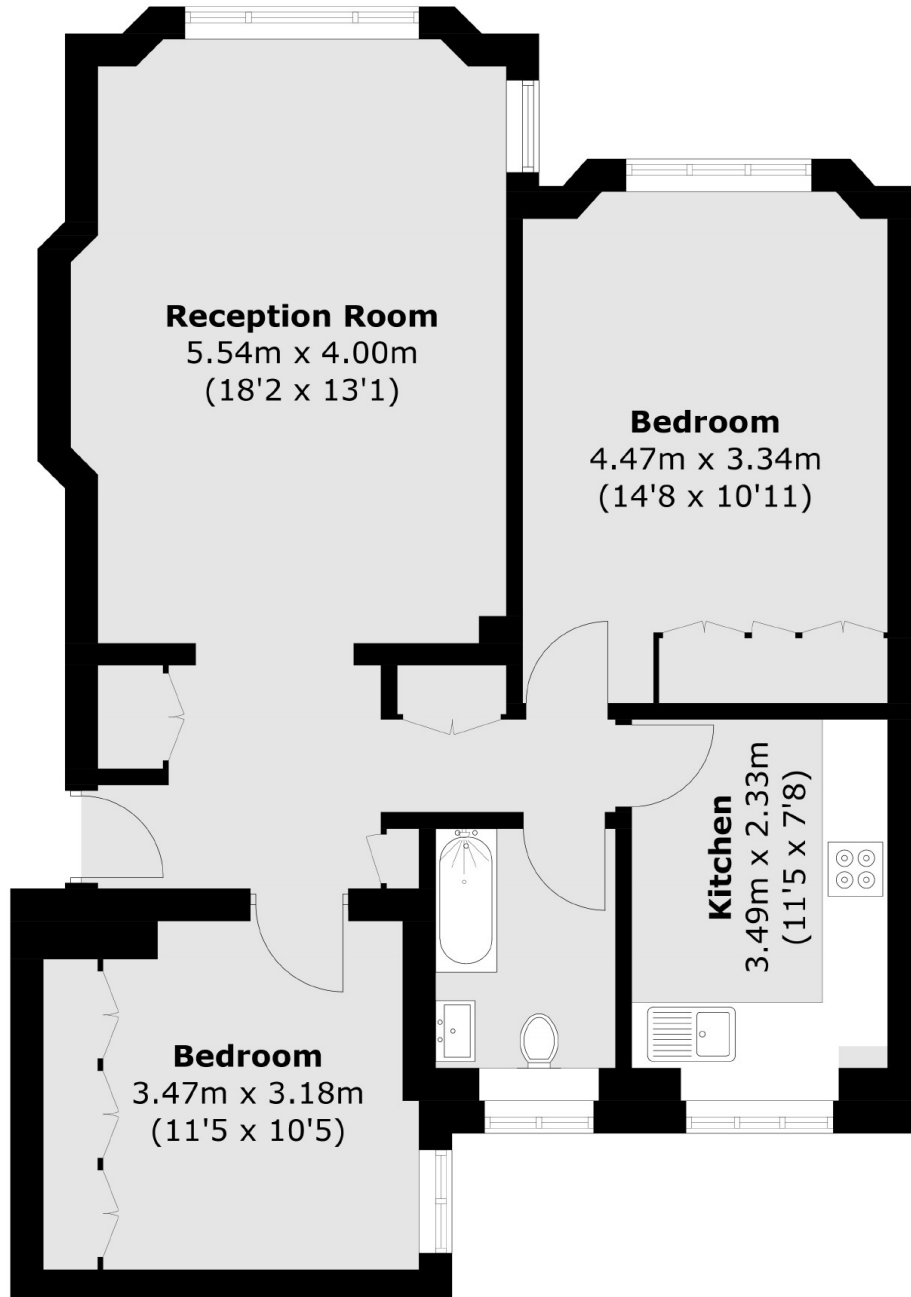
This spacious apartment is set within an art deco style mansion block and has two double bedrooms with fitted wardrobes. The property benefits from communal gardens, bicycle storage and will be sold with no onward chain.

Kingswood Court is ideally located between South Hampstead and West Hampstead giving excellent transport links across London. West End Lane has many restaurants, cafes, and bars all within easy reach.

Features

- Two Double Bedrooms
- Separate Kitchen
- Bicycle Storage
- Communal Gardens
- Option For Residents Parking
- No Onward Chain

West End Lane,
London, NW6



Total area (approx.): 71.9 sq. m (773.9 sq. ft)