



## Belsize Road, NW6

£699,950

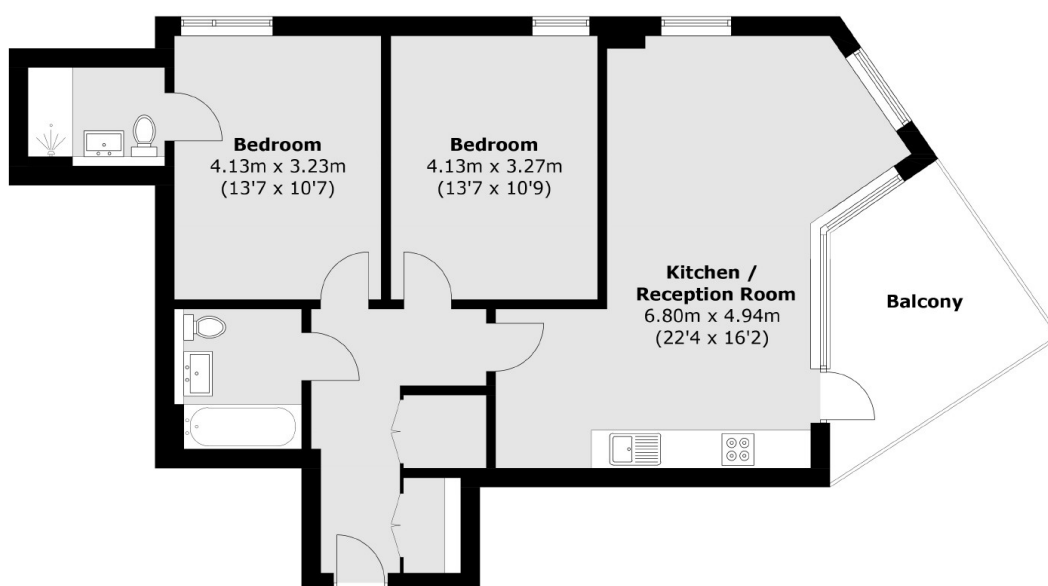
This bright and spacious two double bedroom apartment is set on the eighth floor (with lift access) within a striking recently built development. The property benefits from a private balcony, underfloor heating, allocated parking and it will be sold with no onward chain.

Belsize Road is within half a mile from both South Hampstead and Swiss Cottage and just a short walk to all of the various shops, cafes and restaurants the area has to offer. There are also multiple transport links nearby including the Jubilee, Bakerloo, Metropolitan and Overground lines.

### Features

- Two Double Bedrooms
- Allocated Parking Space
- Large Balcony
- Concierge
- Air Conditioning
- Bicycle Storage

Belsize Road,  
London, NW6



Total area (approx.): 77.4 sq. m (833.1 sq. ft)  
Balcony: 10.4 sq. m (111.9 sq. ft)