



Mowbray Road, NW6

£875,000

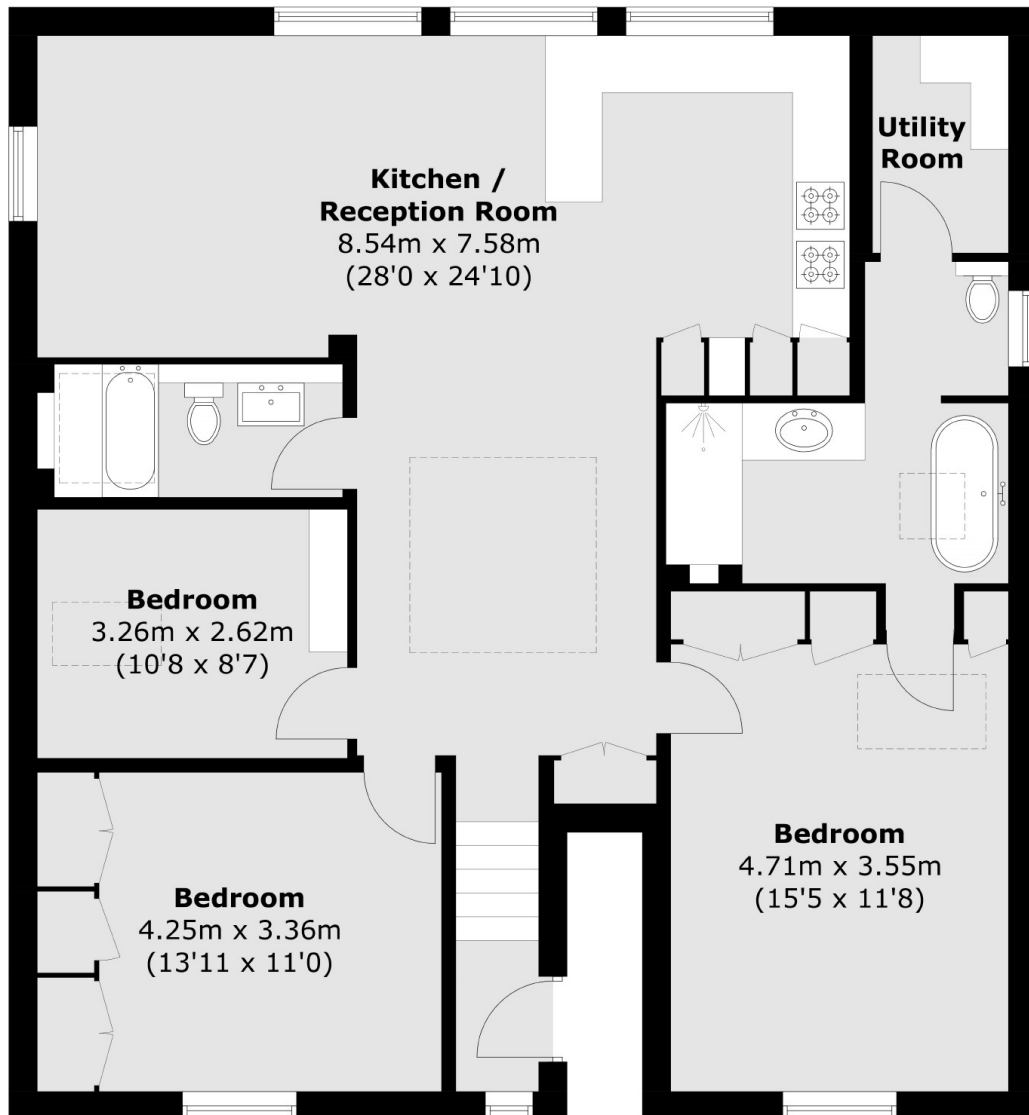
This beautiful apartment sits on top of an imposing period house with windows on all four aspects. High ceilings, immaculate and modern interiors along with plenty of character. The property will be sold with no onward chain.

Mowbray Road is located a short distance from the local shops and amenities of Kilburn High Road. The closest underground station is Kilburn (Jubilee line) and Brondesbury (Overground).

Features

- Three Bedrooms
- Two Bathrooms
- Open Plan Reception
- Top Floor
- Electric Roof Window
- No Onward Chain

Mowbray Road, London, NW6



Second Floor

Total area (approx.): 109.4 sq. m (1,177.6 sq. ft)