



Finchley Road, NW3

£825,000

We are delighted to offer this very large three bedroom apartment within this highly regarded mansion block with passenger lift and communal garden. This apartment offers lots of natural light and is over 1000 sq ft. Ideally located for access into Central London.

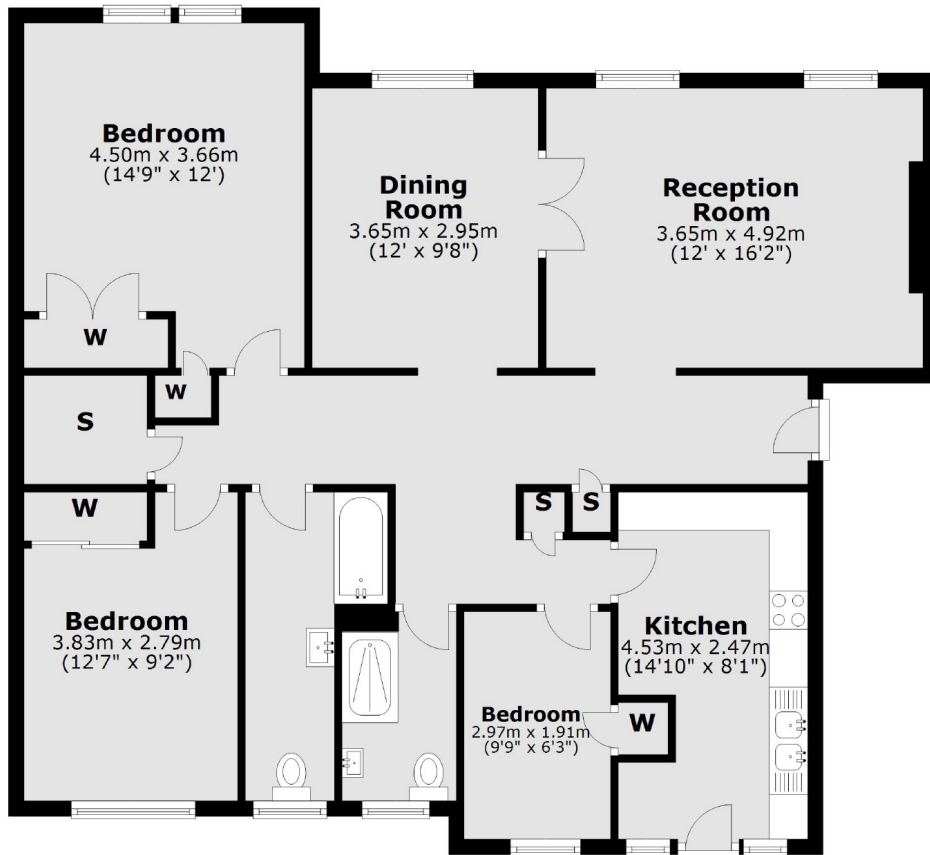
Mandeville Court is conveniently located to Finchley Road & Frognal Overground and Finchley Road tube station (Jubilee and Metropolitan Lines) and excellent local amenities

Features

- Top Floor Apartment
- Three Bedrooms
- Share Of Freehold
- Passenger Lift
- Shared Garden
- No Chain

Finchley Road,
London, NW3

Fifth Floor



Total area: approx. 105.9 sq. metres (1140.1 sq. feet)