



West End Lane, NW6
£1,895,000

Dexters



West End Lane, NW6

A rare opportunity to purchase a four bedroom apartment with direct access to the communal gardens located in this popular Victorian mansion block. The property benefits from a share of freehold and it will be sold with no onward chain.

As you enter into the wide entrance hall there is a large reception room leading through to a dining room which was previously two separate rooms. There is a modern kitchen with integrated appliances, guest w/c and utility room.

The principle bedroom is to the rear and has lots of fitted storage space with doors leading out to the well maintained communal gardens. There are a further three bedrooms, one with fitted wardrobes, Ensuite and additional family bathroom.

The property is located in this well managed BAM estate with all the benefits it has to offer. There is an on site porter and communal gardens to enjoy.

Buckingham Mansions is ideally located close to West Hampstead underground station (Jubilee line) as well as all the local amenities that West End Lane has to offer.

Features

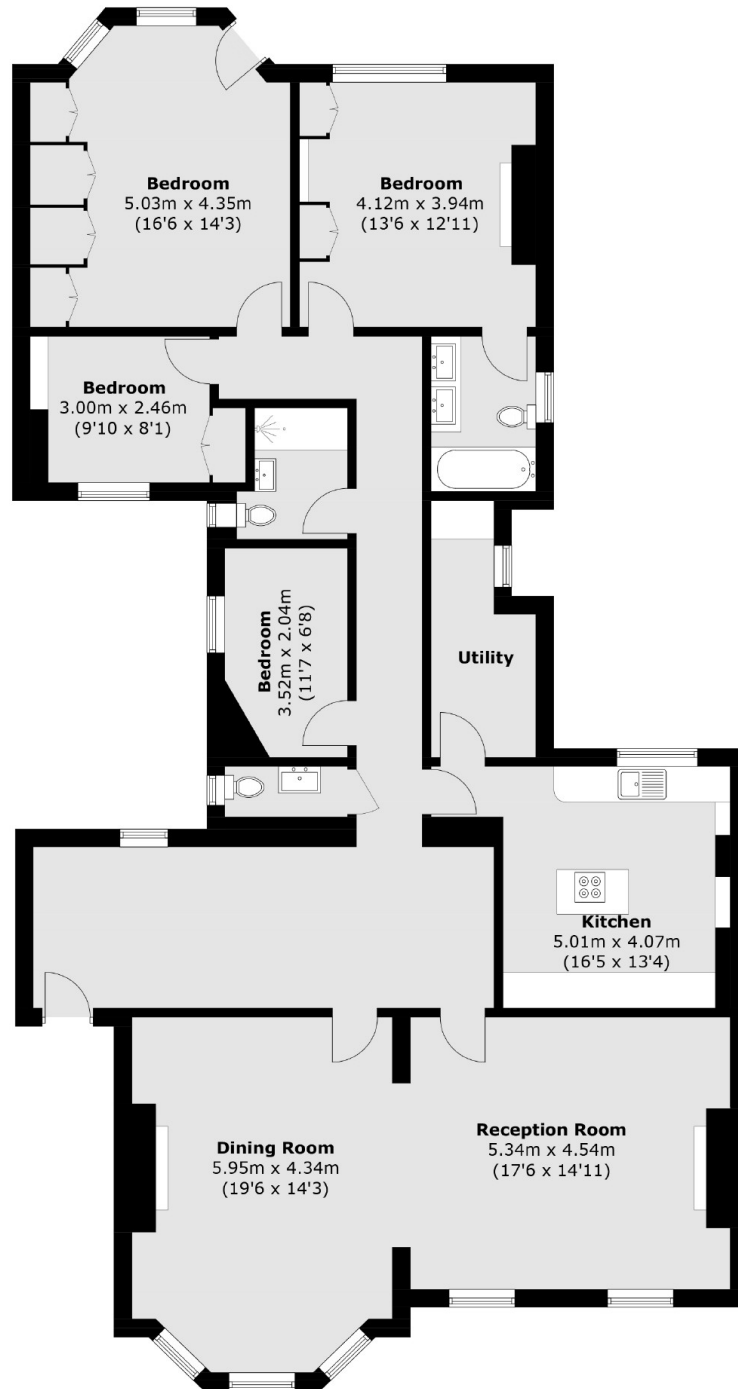
- Four Bedrooms
- Share of Freehold
- Communal Gardens
- Two Reception Rooms
- No Onward Chain
- Two Bathrooms







West End Lane,
London, NW6



Total area (approx.): 176.9 sq. m (1,904.1 sq. ft)