



## Hemstal Road, NW6

£795,000

This three bedroom apartment is spread over two floors and has been cleverly designed by the current owner to a very high specification and is ideal for entertaining guests. The property offers in excess of 1100sqf of accommodation and will be sold with no onward chain.

Extremely well located just off West End Lane, the variety of shops, restaurants, open spaces and multiple transport links are only a short walk away.

### Features

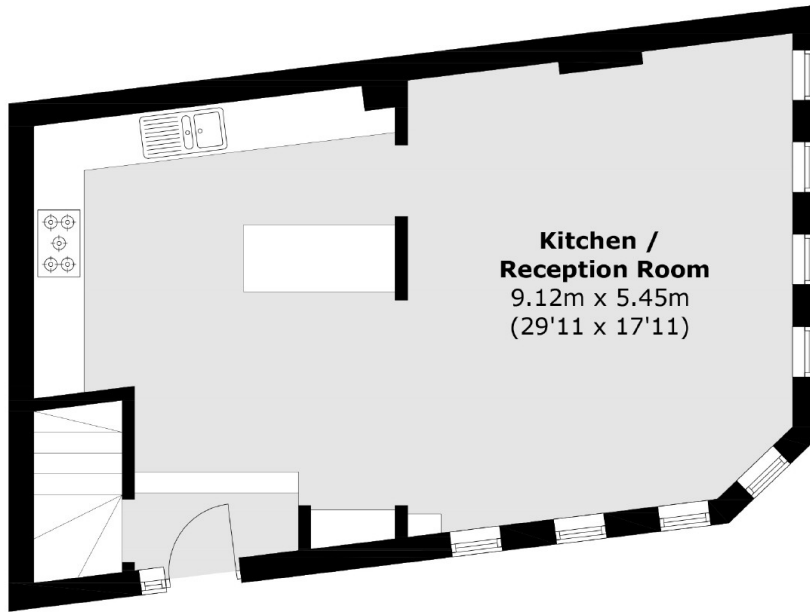
- Three Bedrooms
- Two Bathrooms
- Communal Storage
- Recently Refurbished
- Share Of Freehold
- No Onward Chain



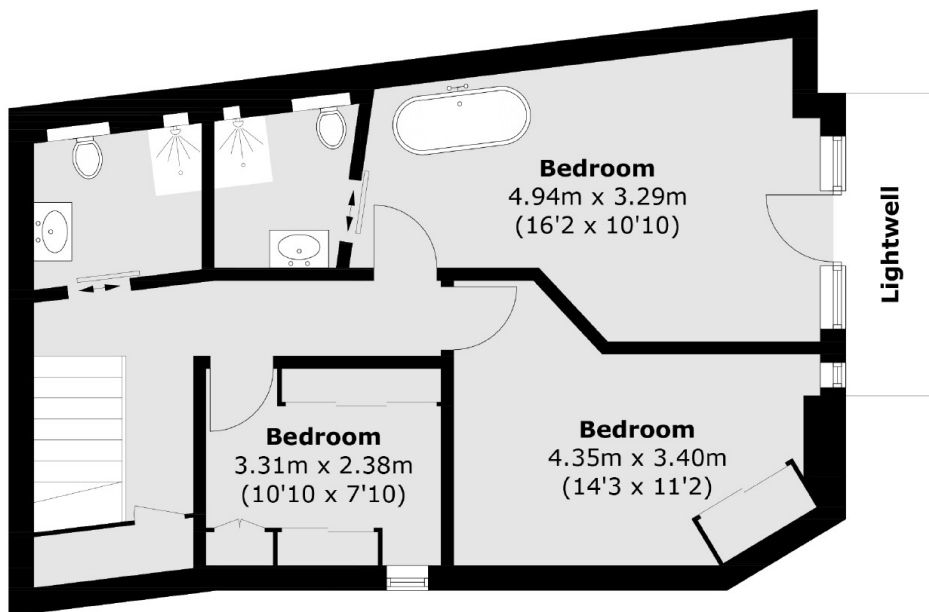
**Hemstal Road, NW6**



# Hemstal Road, London, NW6



## Ground Floor



## Lower Ground Floor

Total area (approx.): 102.6 sq. m (1,104.3 sq. ft)  
Lightwell area (approx.): 4.0 sq. m (43.0 sq. ft)